



مشوار الألف ميل يبدأ بحطوة



بِسْمِ اللَّهِ الرَّحْمَنِ الرَّحِيمِ

السلام عليكم ورحمة الله  
وبركاته

# Kingdom :protista

## Sub kingdom :protozoa

Phylum

**Sarcomastigophora**

**Ciliophora**

**Apicomplexa**

**Sarcodina**

**mastigophora**

**zoomastigophora**

**Kinetoplastida**

**Diplomonodida**

**Trichomonadida**

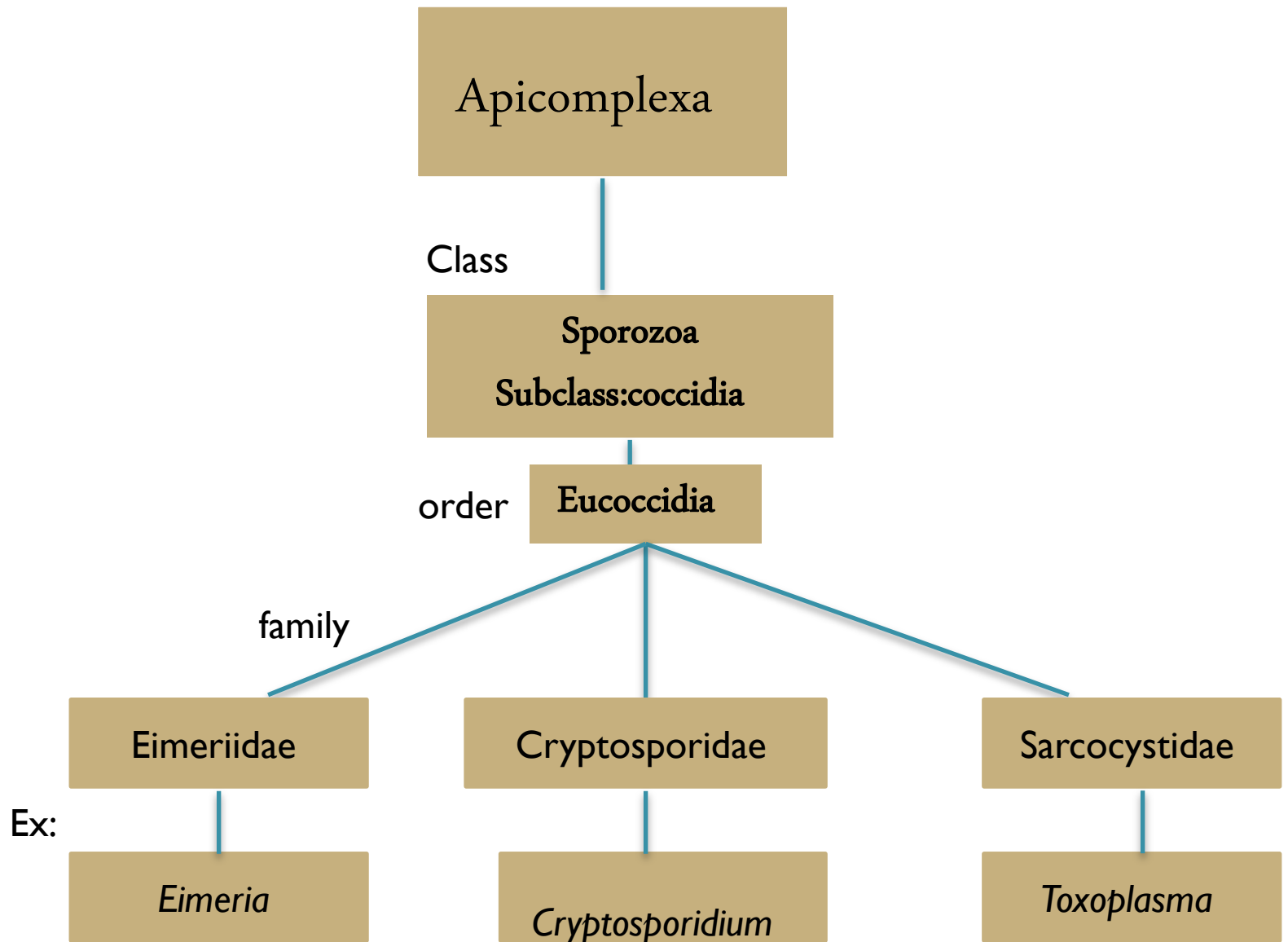
Class

**Sporozoa**

**Subclass:coccidia**

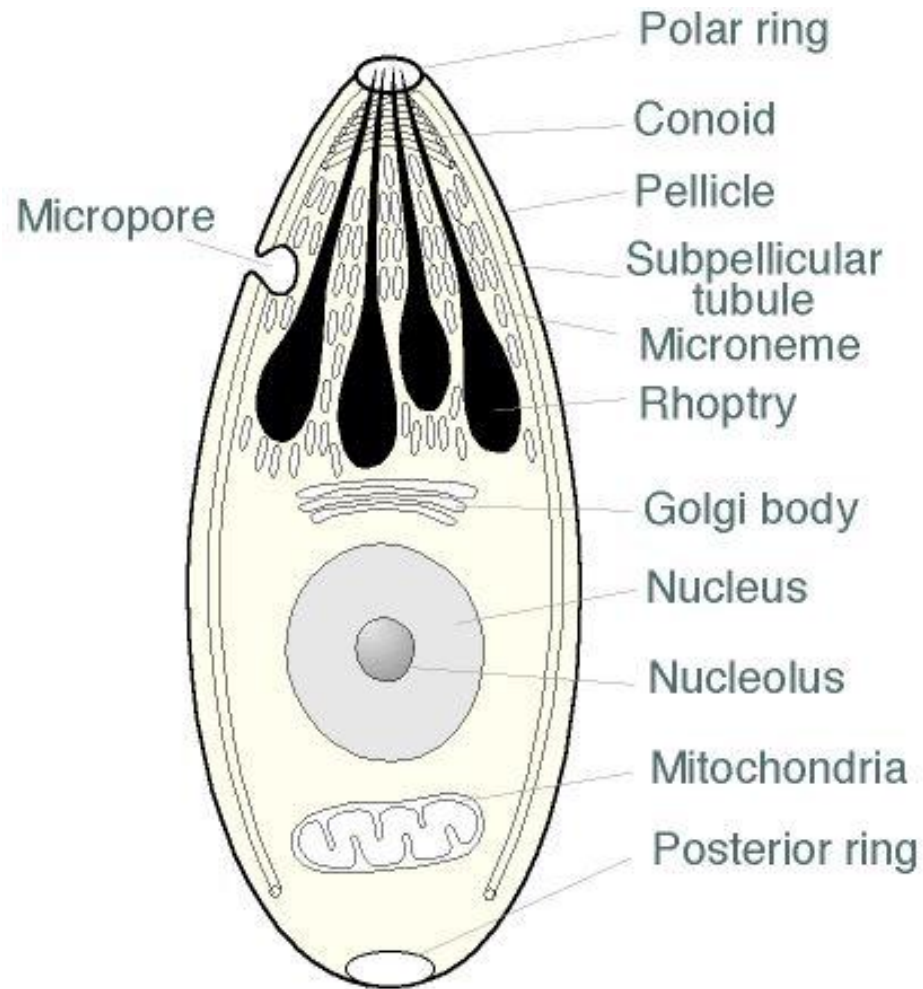
order

**Eucoccidia**



# Phylum: Apicomplexa

## Class: Sporozoa



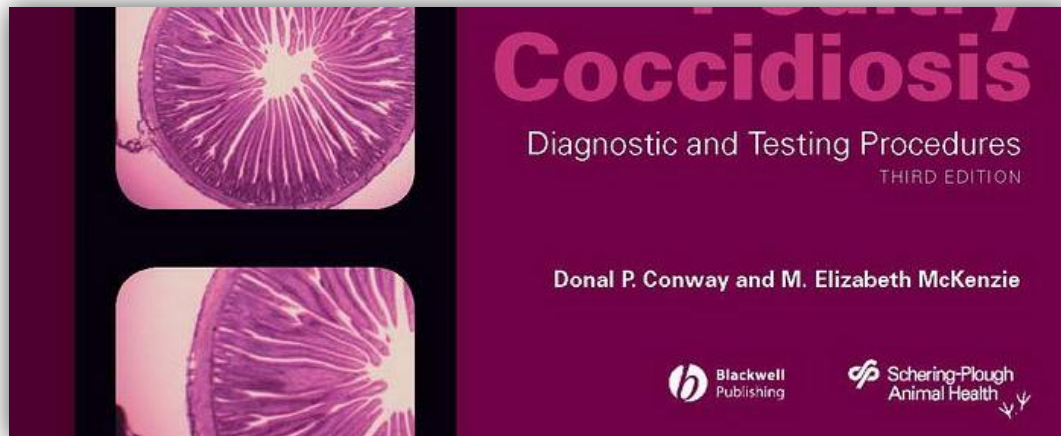
Phylum: Apicomplexa

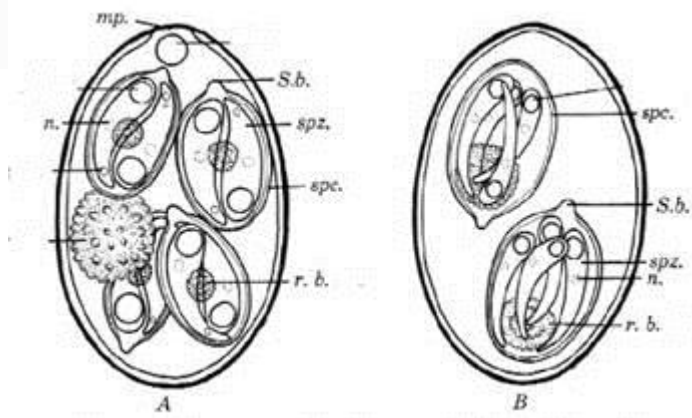
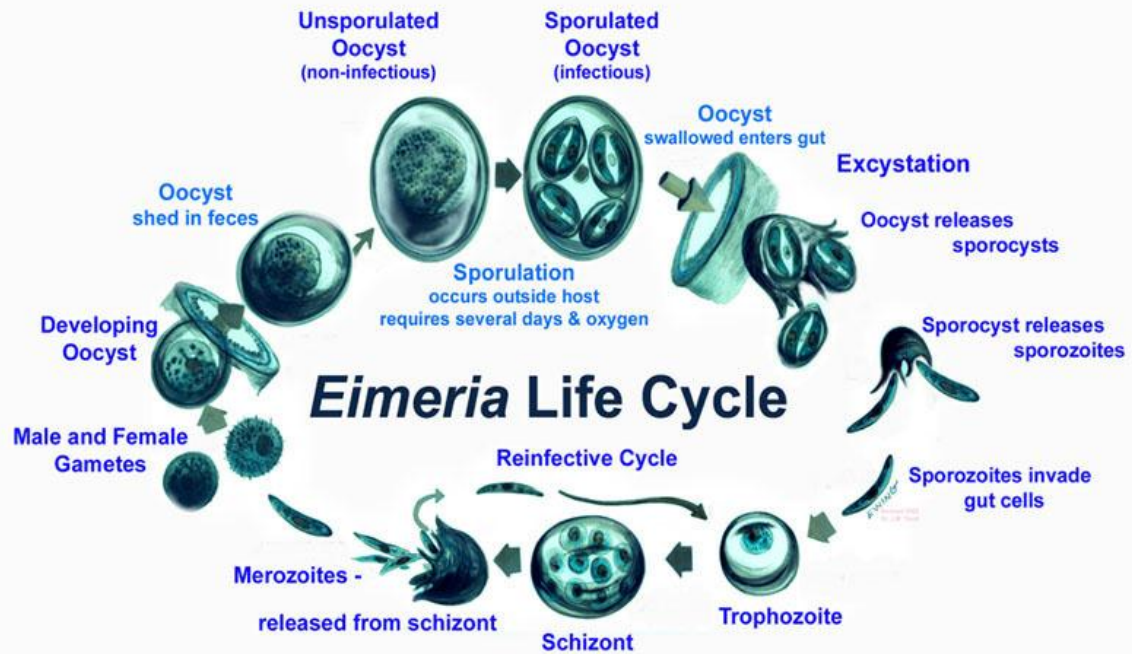
Class: Sporozoa

Subclass: Eucoccidia

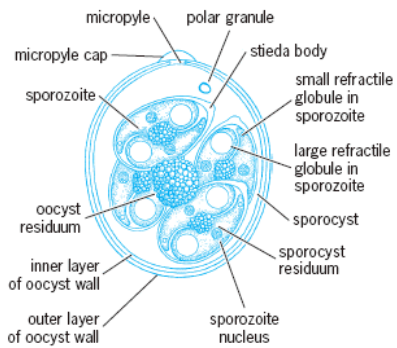
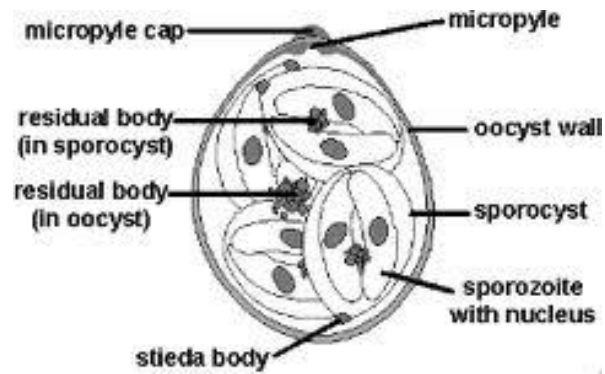
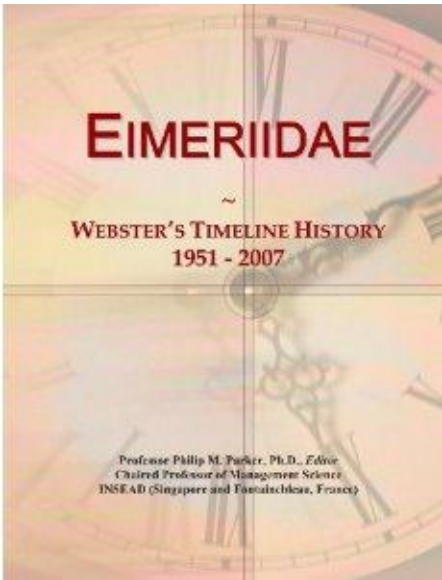
Order: Eucoccidia

Family: Eimeriidae

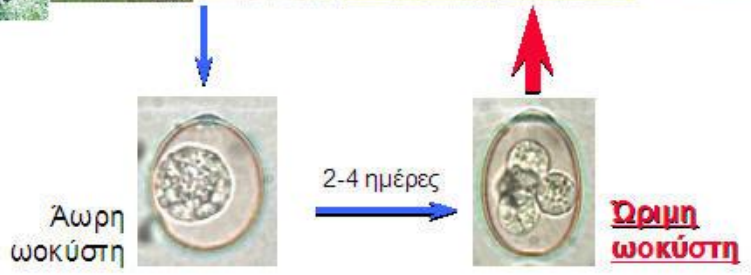






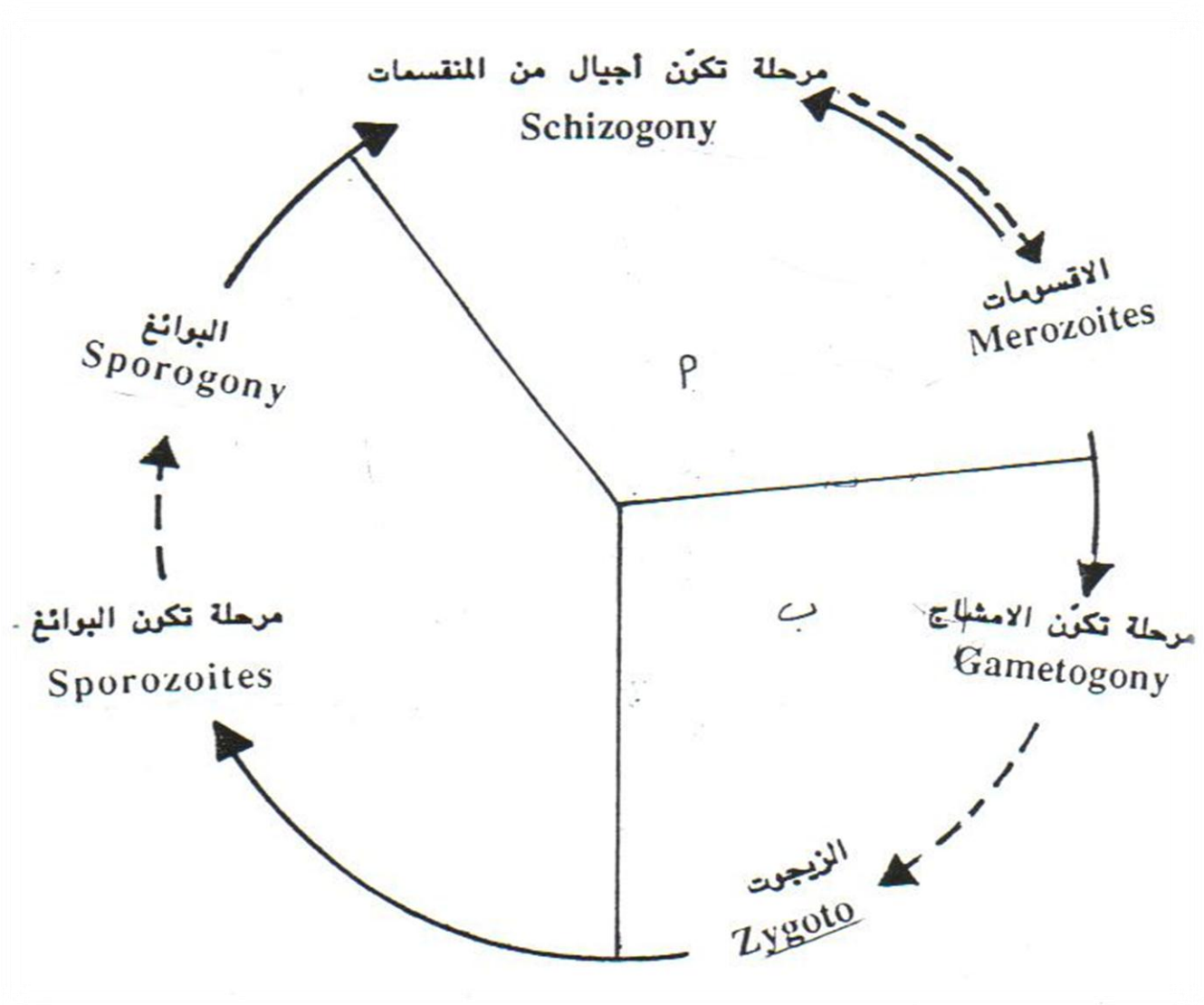


*Eimeria* spp.

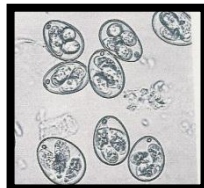
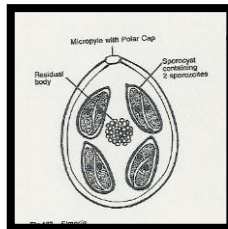
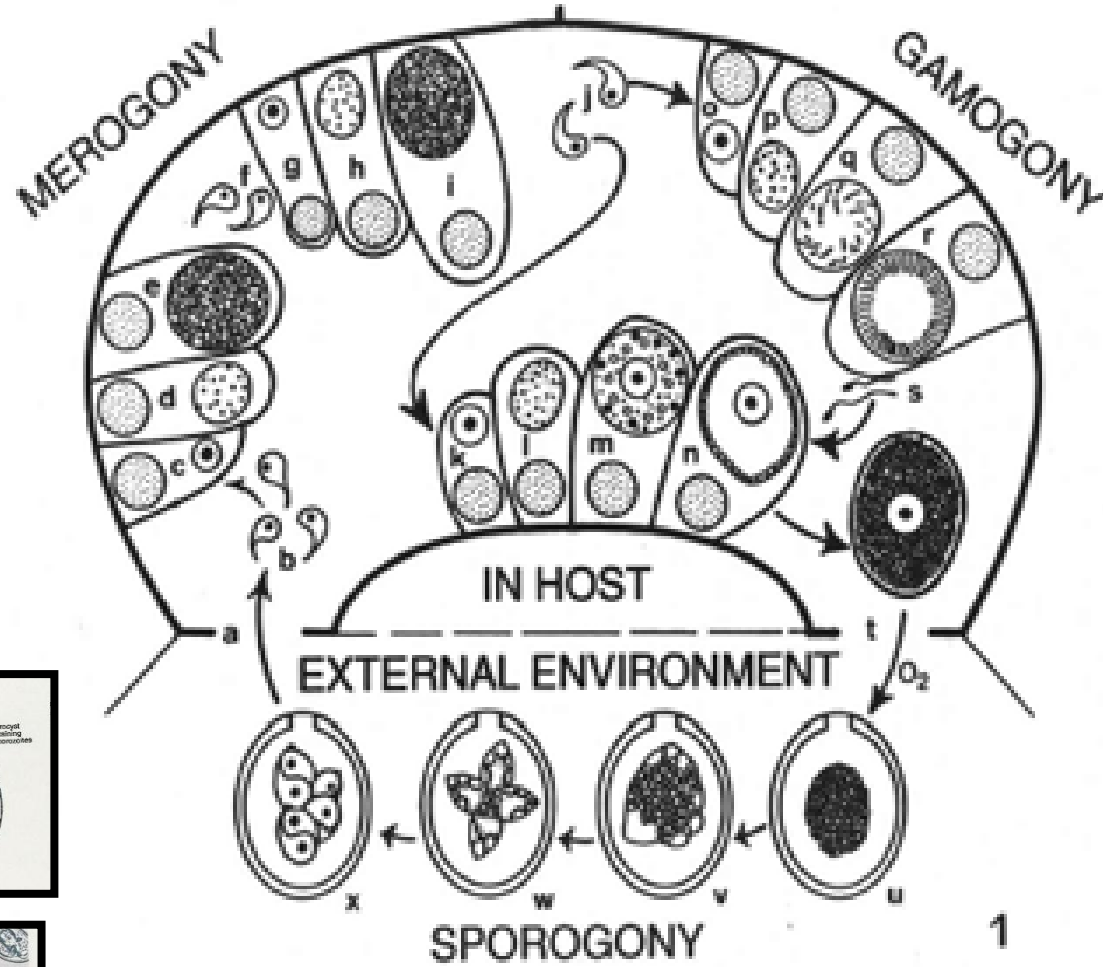




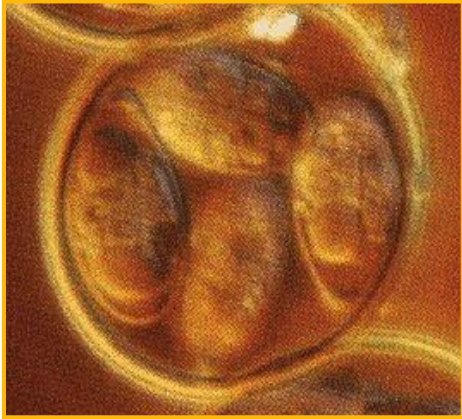
# دورة الحياة:



# دورة الحياة:



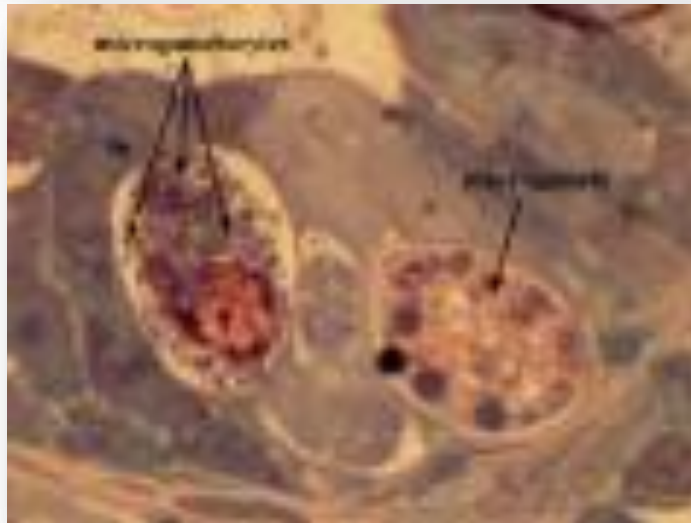
# الأمراضية:



- حجم الجرعة المعدية
- عدد الخلايا المحطمة في العائل
- مكان التطفل في انسجة العائل
- درجة تكرار العدوى
- عمر المضيف وحالته الصحية
- درجة المناعة المكتسبة او الطبيعية



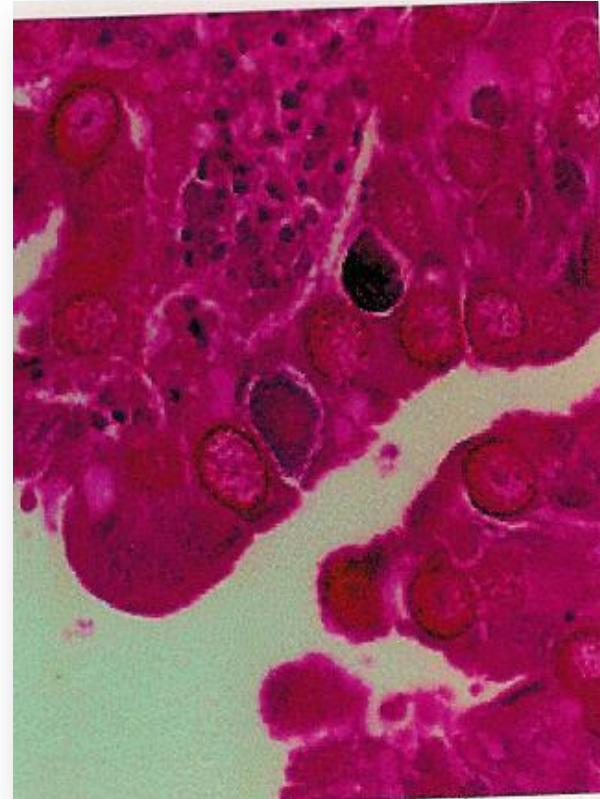
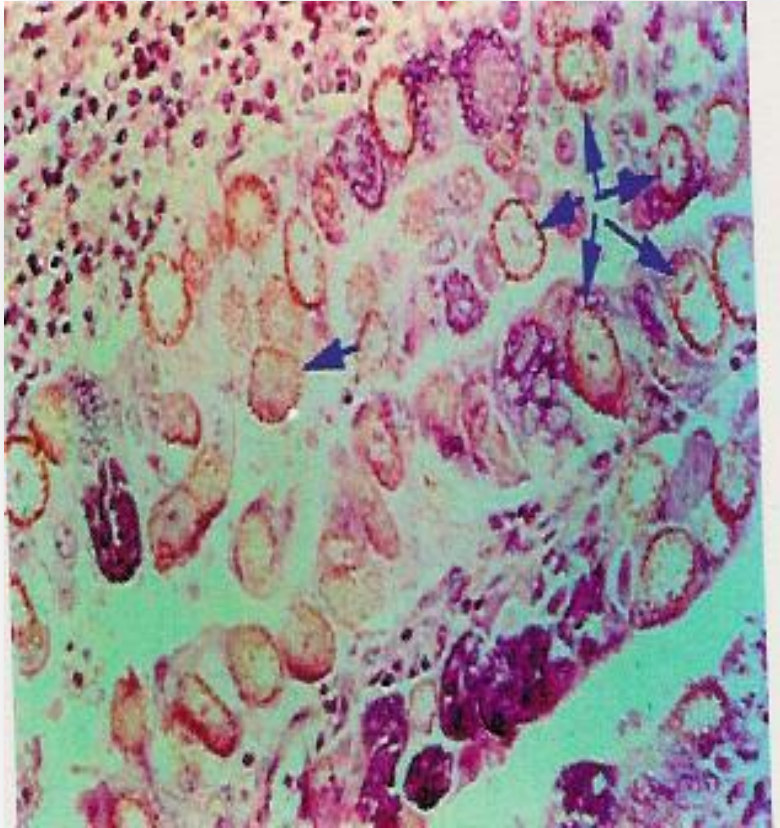
# *Eimeria stiedae*



Necrotic foci



# *Eimeria tenella*



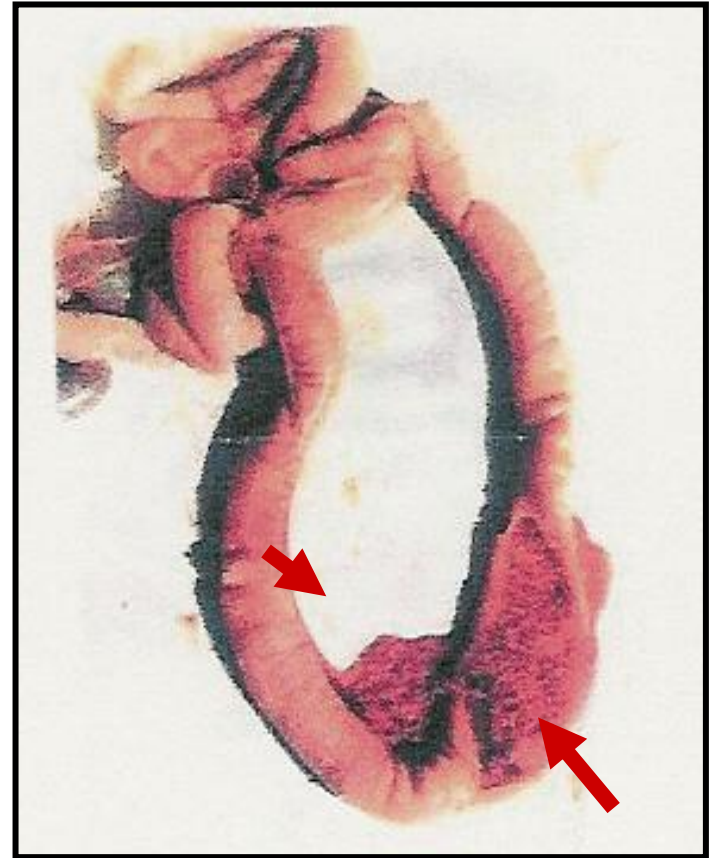
Cecal core



# الأمراضية



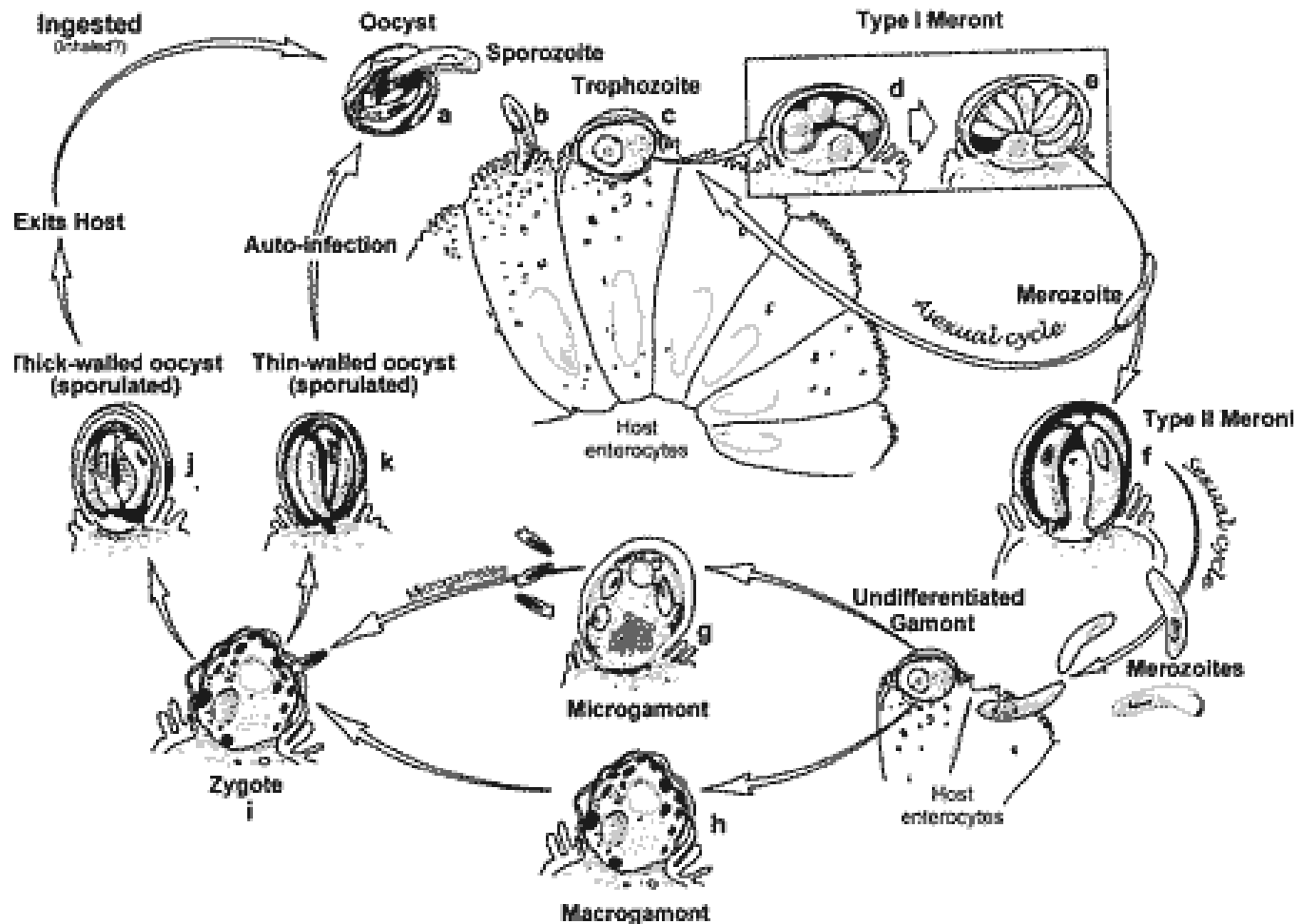
١- تورم منطقة الأعاور



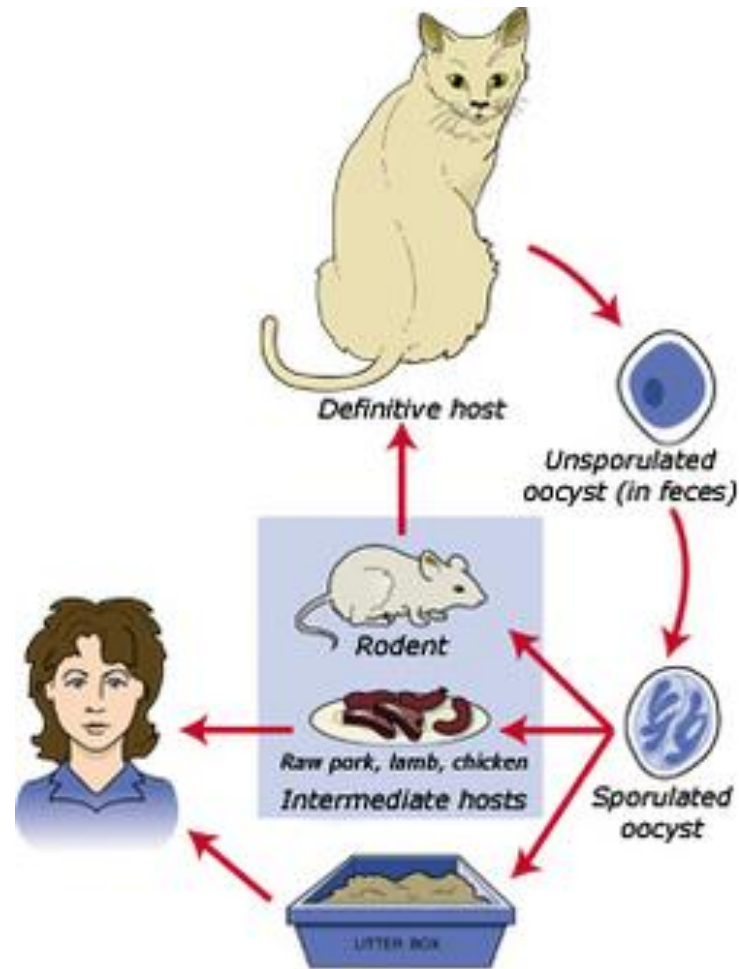
٢- التهاب معوي نزفي في الغشاء المخاطي  
نتيجة انفجار نهايات الشعيرات الدموية



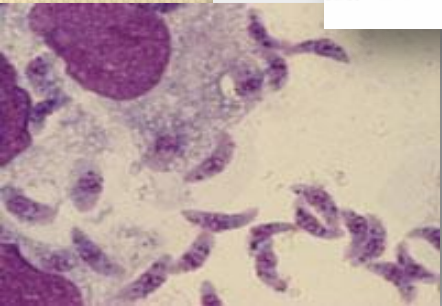
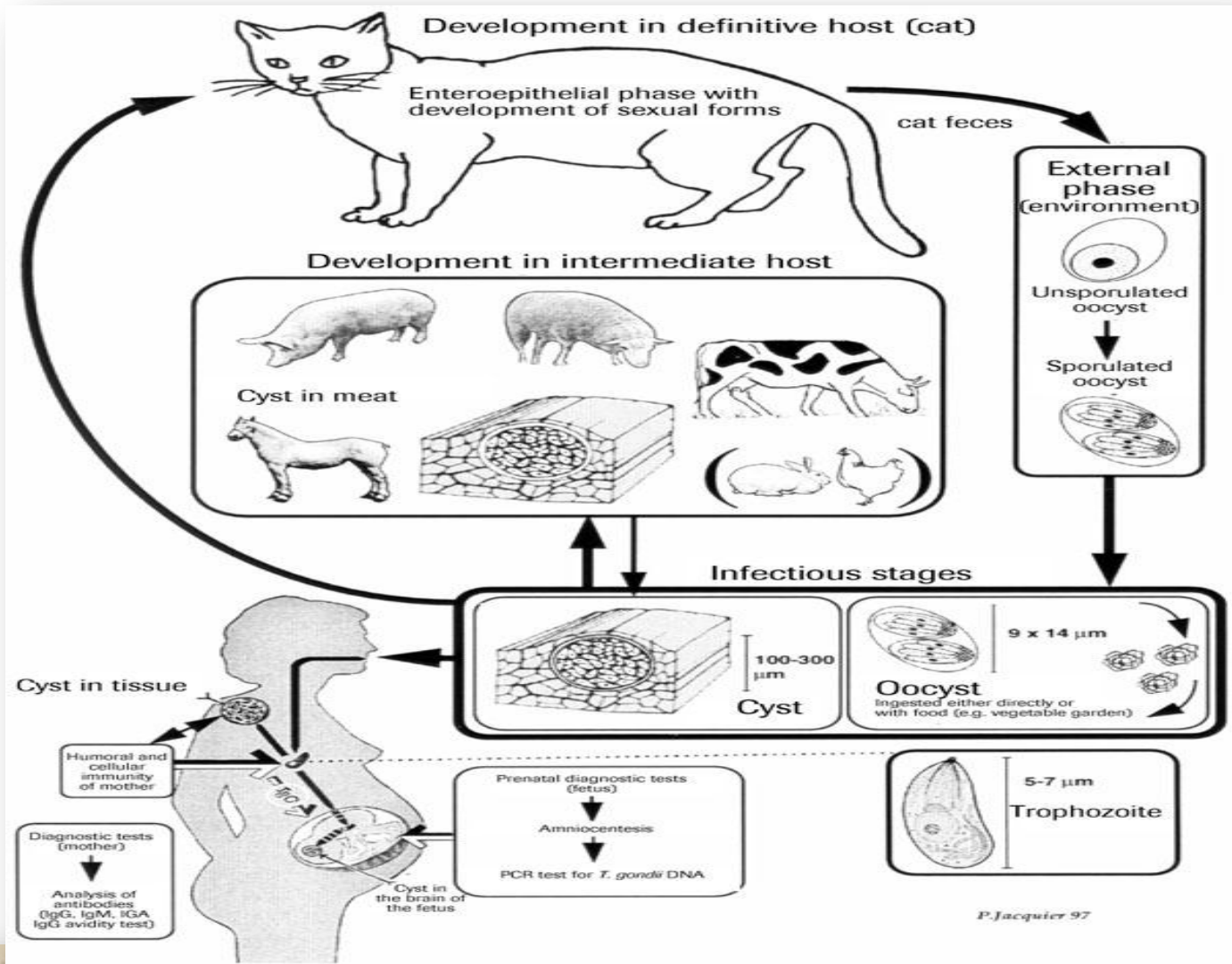
# Cryptosporidium

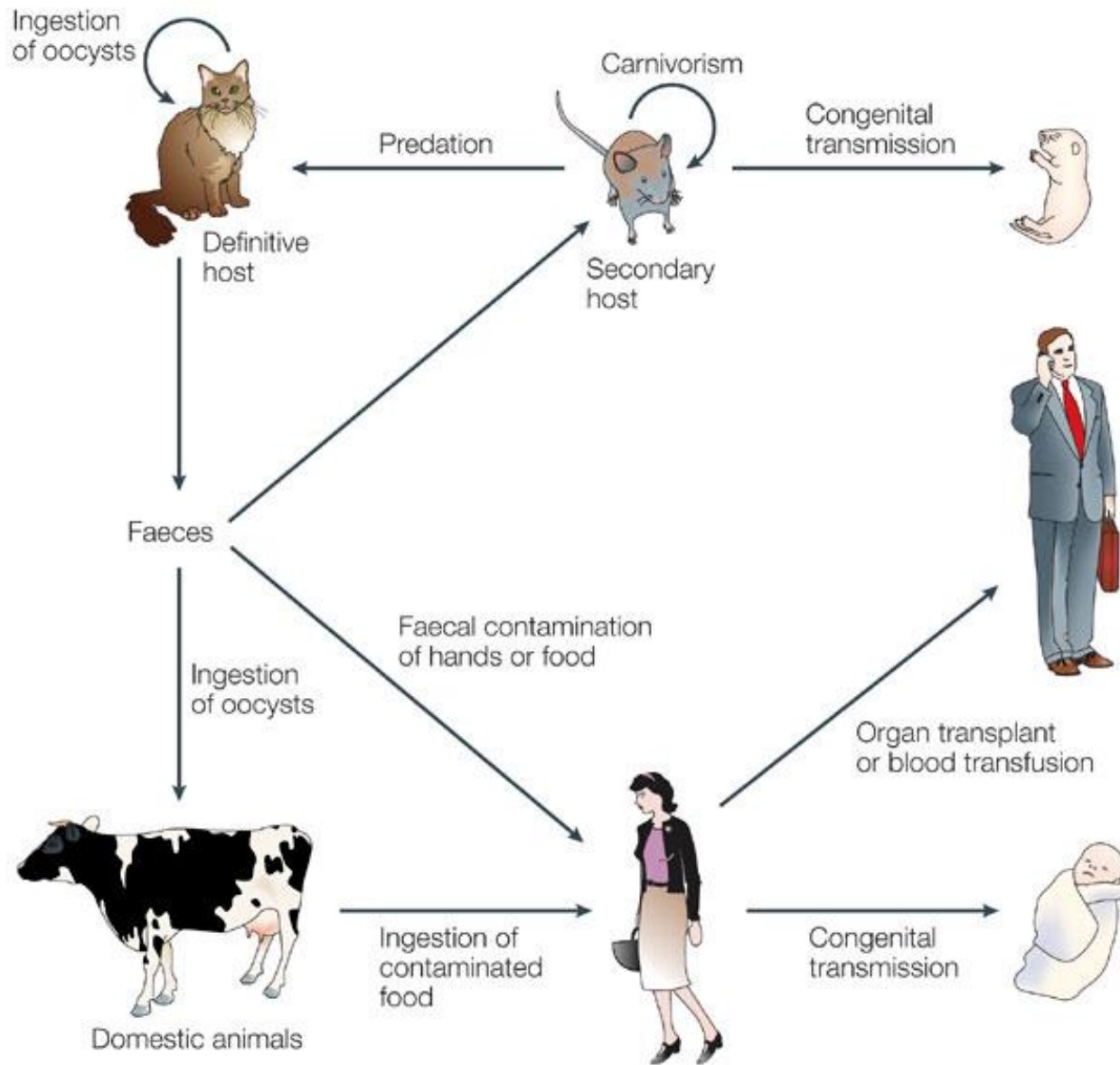


# Toxoplasma

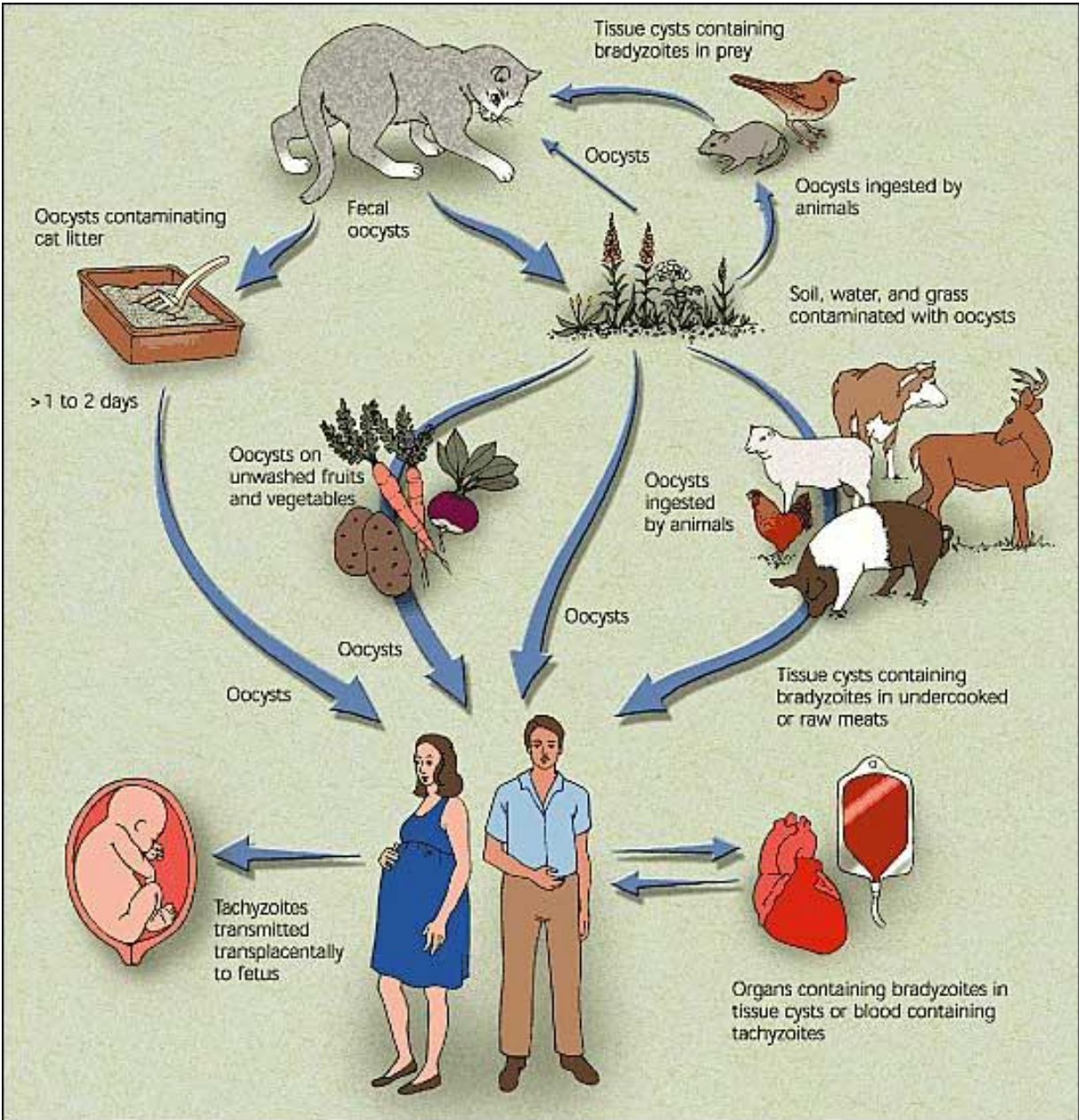


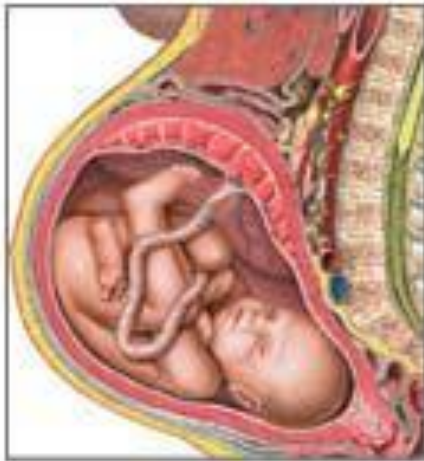
LIFE CYCLE OF TOXOPLASMOSIS











A fetus may contract toxoplasmosis through the placental connection with its infected mother

The mother may be infected by:

Improper handling of cat litter



Handling or ingesting contaminated meat







**Girl with hydrocephalus due to congenital toxoplasmosis**

