



النَّعِيمُ لَا يُدْرِكُ بِالنَّعِيمِ  
وَمَنْ أَثَرَ الرَّاحَةِ فَاتَتْهُ الرَّاحَةُ



www.ZADTrain.com



بِسْمِ اللَّهِ الرَّحْمَنِ الرَّحِيمِ

السَّلَامُ عَلَيْكُمْ وَرَحْمَةُ اللَّهِ وَبَرَكَاتُهُ

**Phylum : Nematelminthes**

**Class : Nematode**

**Family : Ascarididae**

**Ex. : 1- Ascaridia galli**

## Ascaridia galli



العائل النهائي:

---

العائل الوسيط:



مضيف ناقل:

Ascaridia galli

شکل الطفیل \*



Anterior end  
(Male + Female)

Ascaridia galli

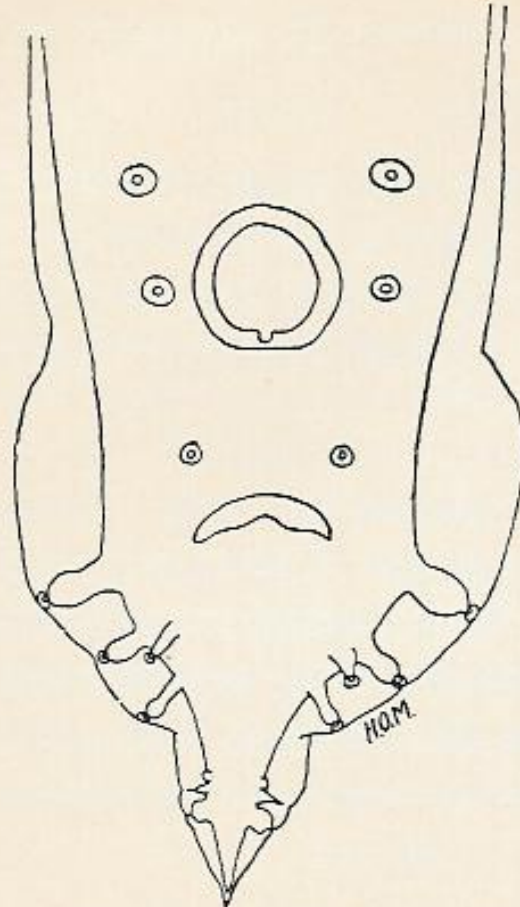
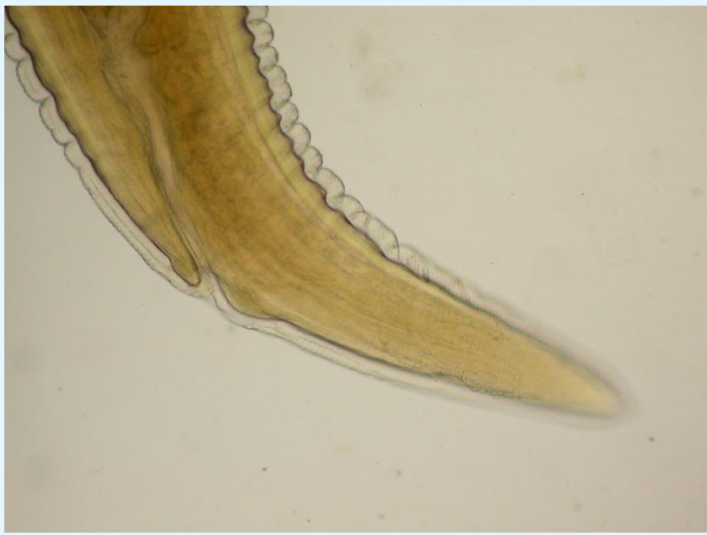


Fig 1.96 Ventral view of the hind end of male *Ascaridia galli*.

# Ascaridia galli



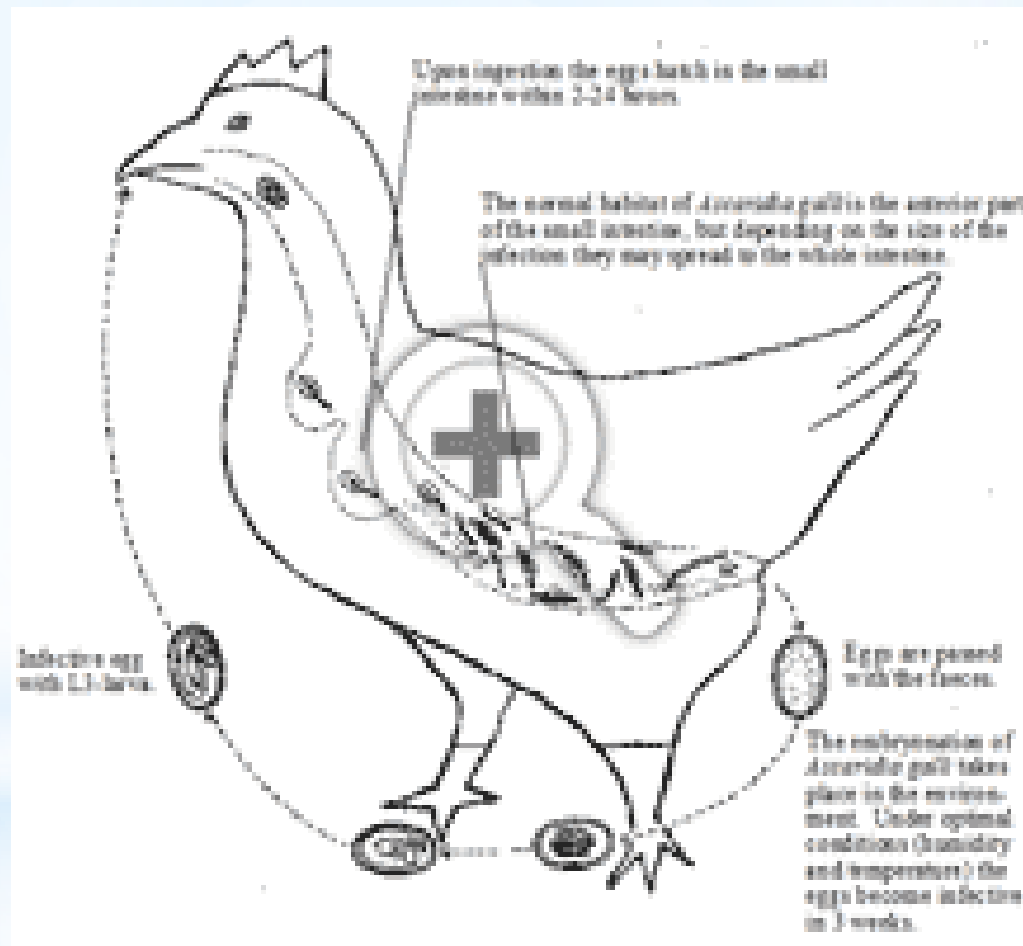
**Male posterior end**



**Female posterior end**

# Ascaridia galli

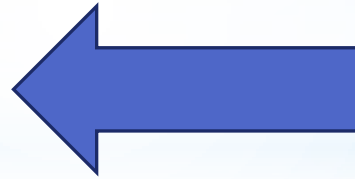
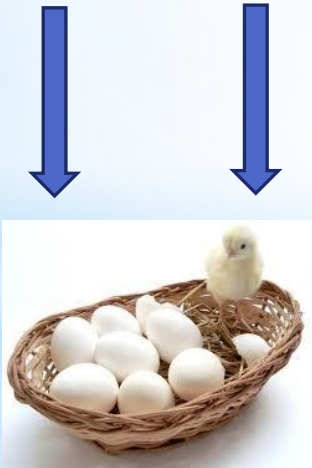
## Life cycle





## Ascaridia galli

الإمراضية:



- التهابات نزفية
- اسهال وفقر مدمم

**Phylum : Nematelminthes**

**Class : Nematode**

**Family : Heterakidae**

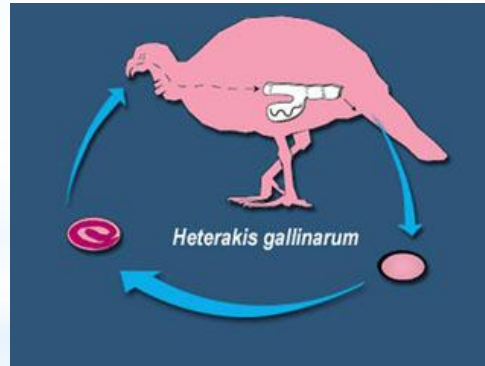
**Ex. : २- Heterakis gallinae**

## Heterakis gallinae



العائل النهائي:

العائل الوسيط:



دودة الارض مضيف ناقل

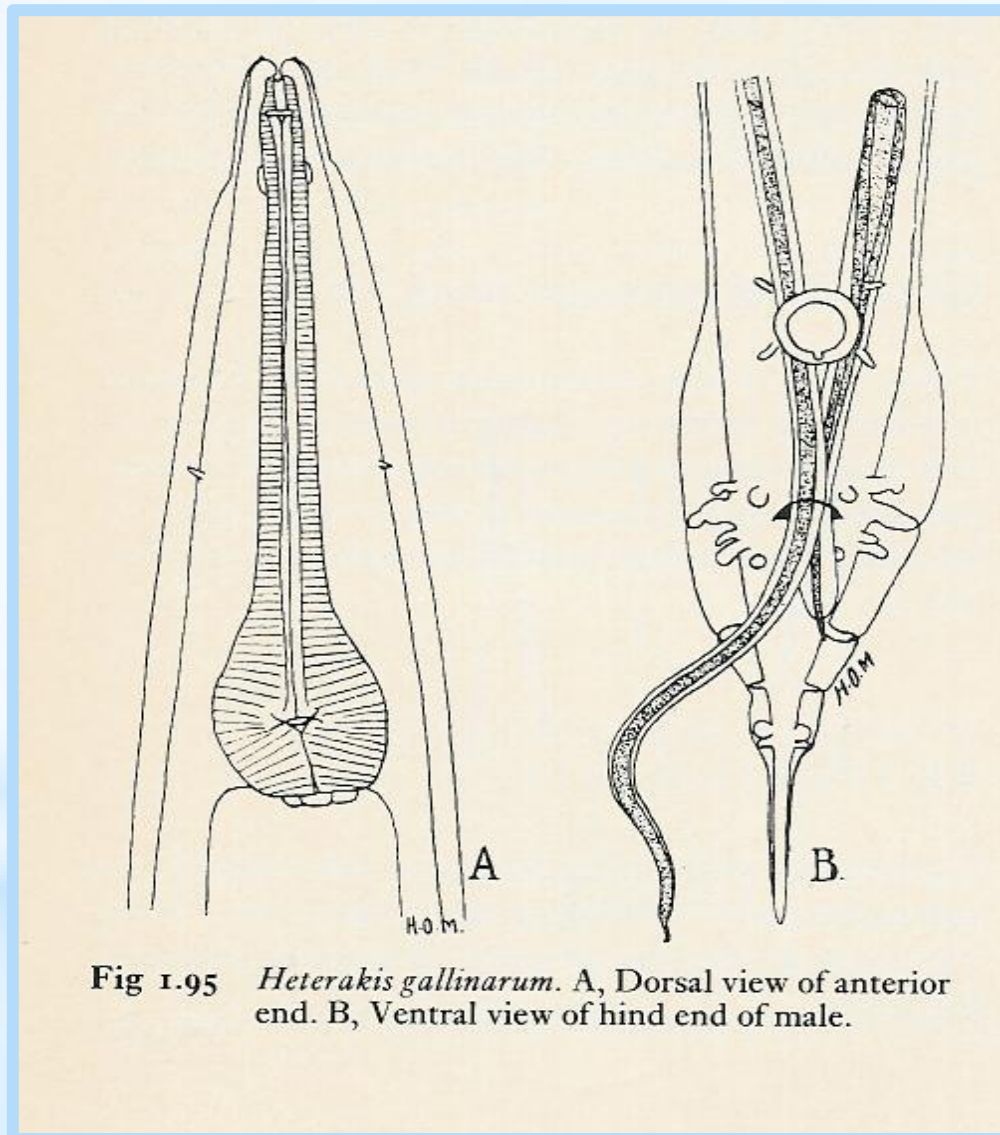
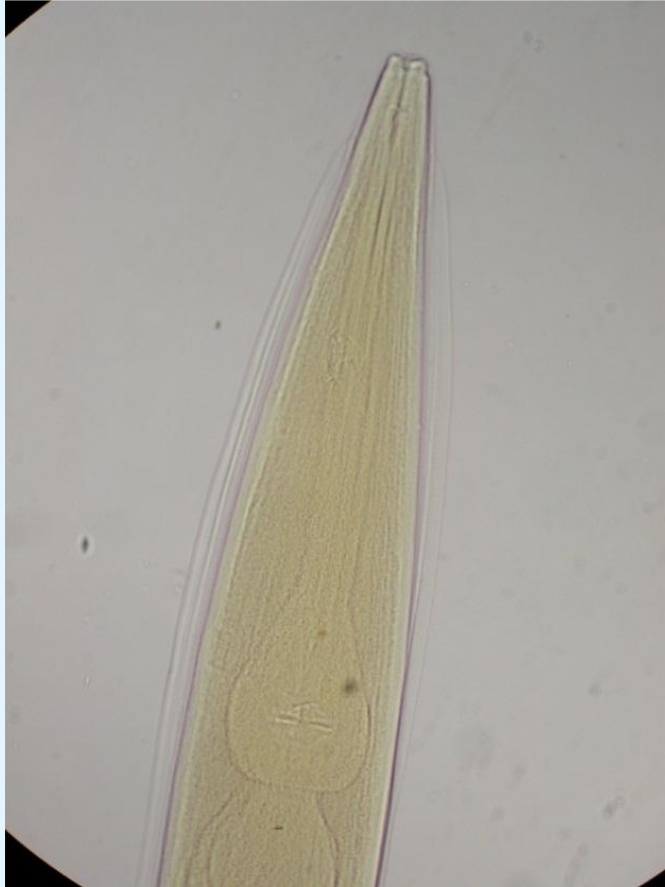


Fig 1.95 *Heterakis gallinarum*. A, Dorsal view of anterior end. B, Ventral view of hind end of male.

Heterakis gallinae



**Anterior end**  
**( Male + Female )**

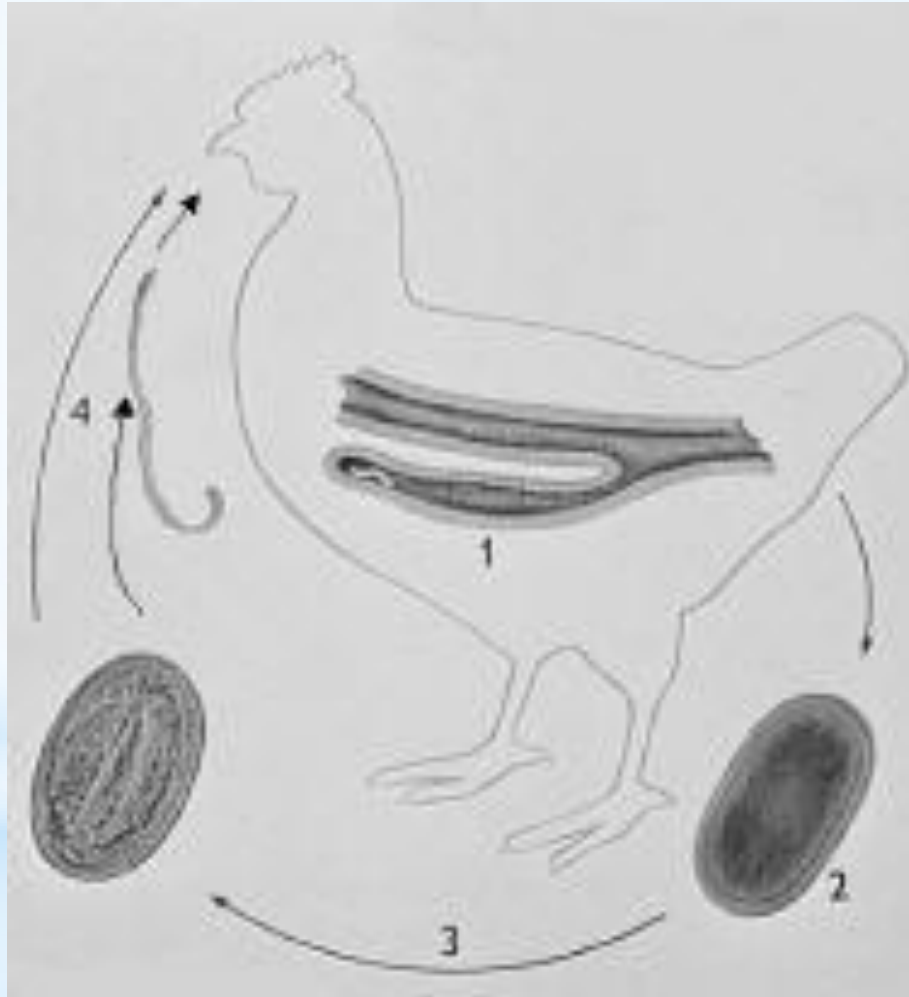
Heterakis gallinae



Male posterior end

Heterakis gallinae

# Life cycle



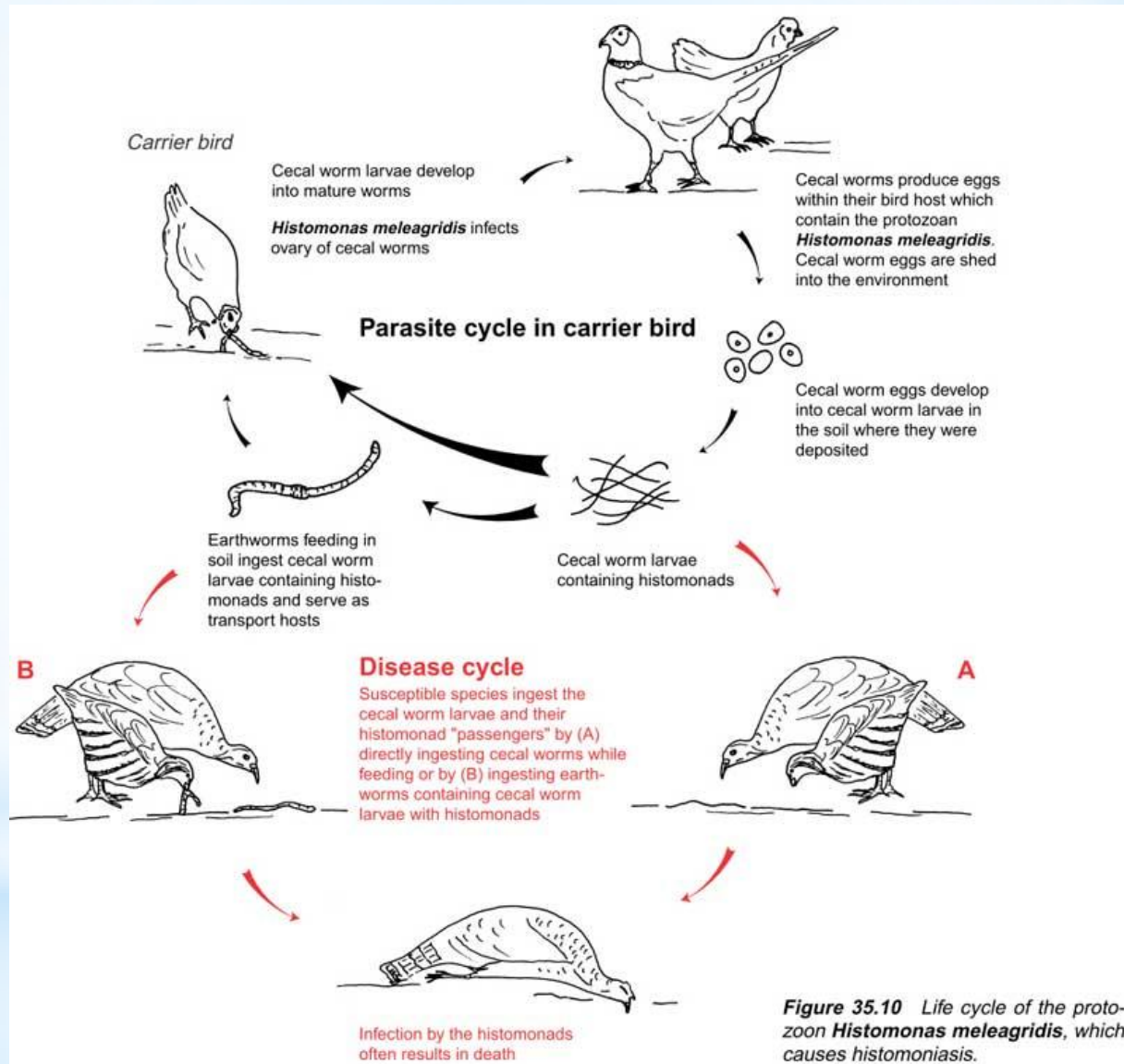
## Heterakis gallinae

الإمراضية:





# Heterakis gallinae



## Heterakis gallinae



التهاب كبدي معوي



مرض الرأس الأسود

**Phylum : Nematelminthes**

**Class : Nematode**

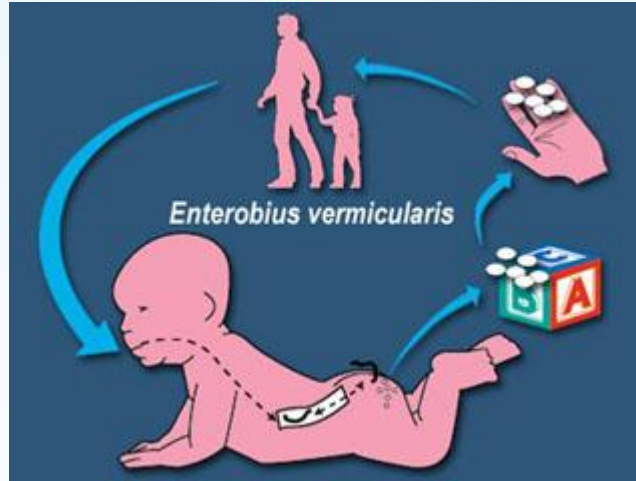
**Family : Oxyuridae**

**Ex. :**

**1- Enterobius vermicularis**

## Enterobius vermicularis

العائل النهائي:

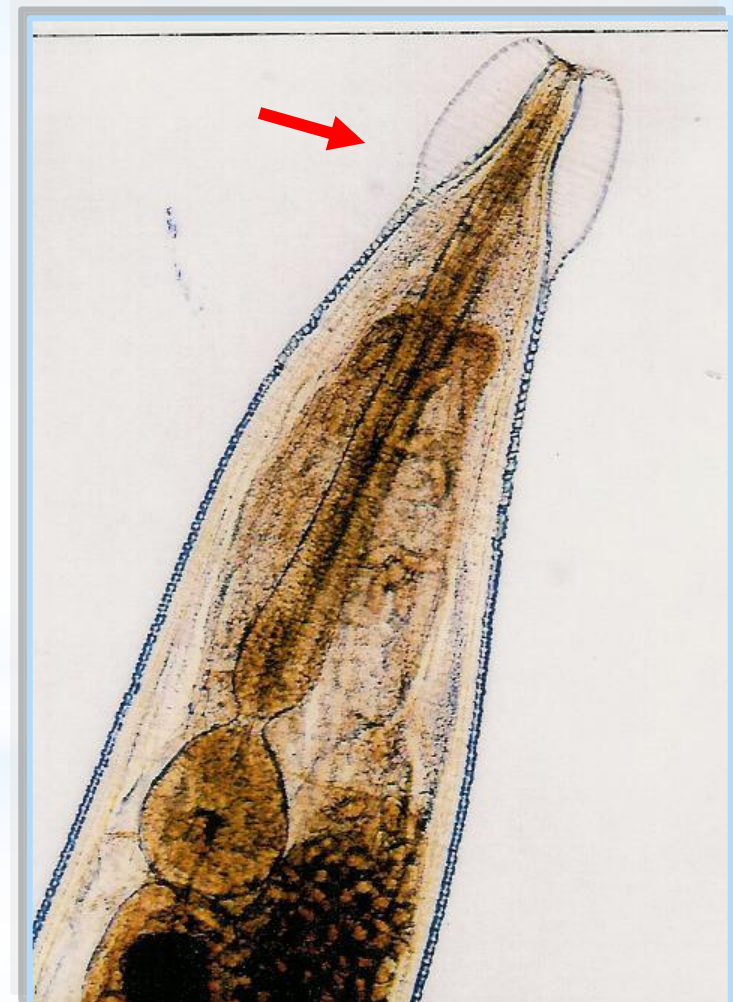


---

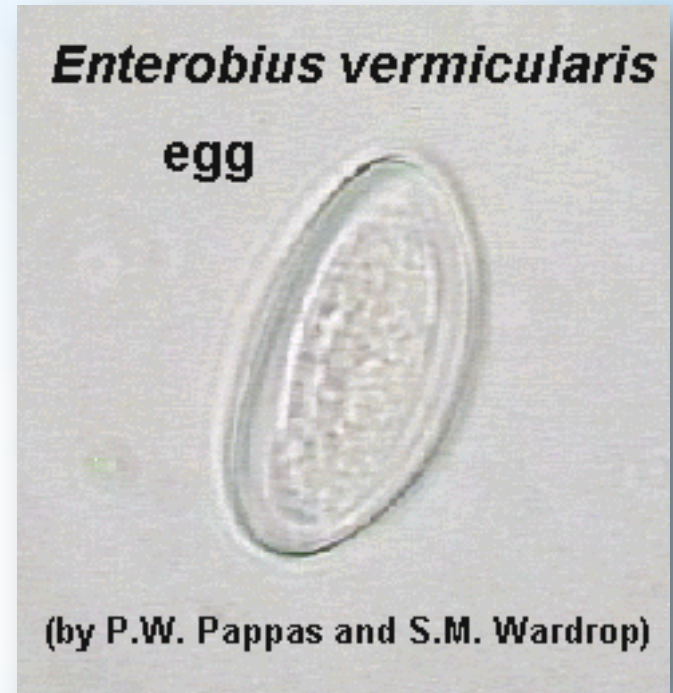
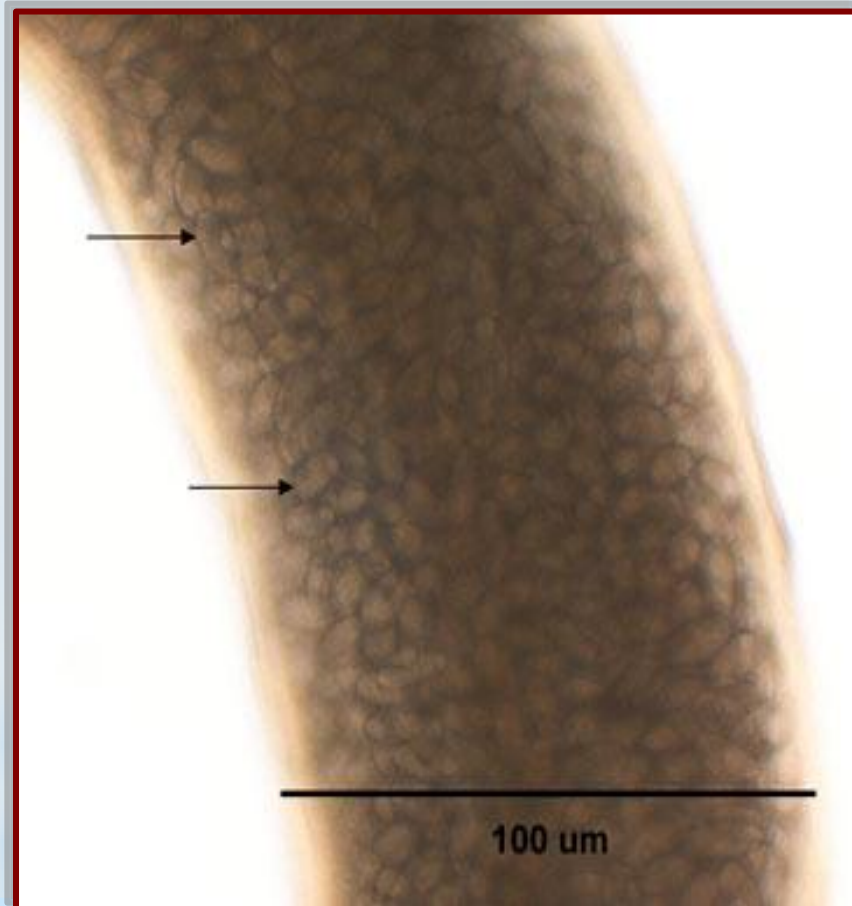
العائل الوسيط:

Enterobius vermicularis

شكل الطفيل\*

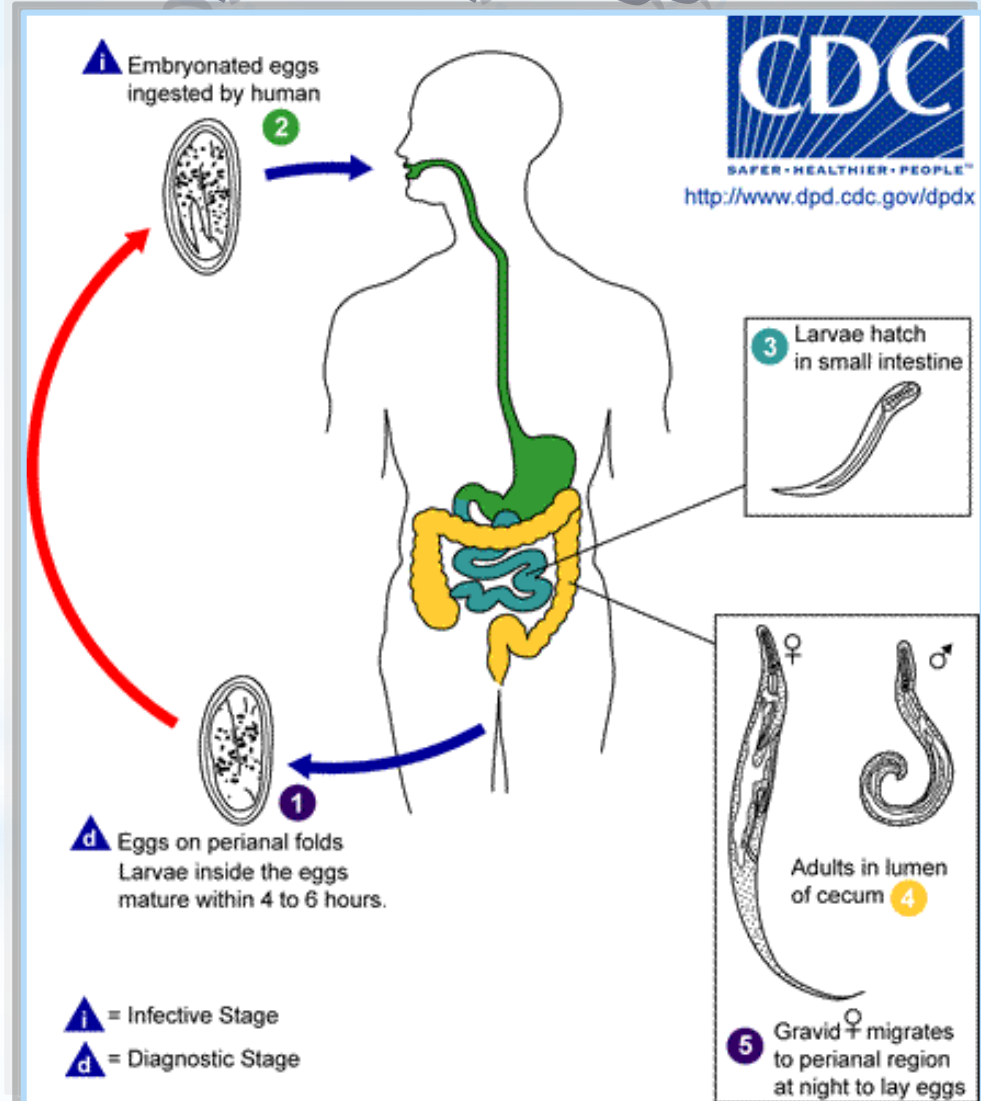
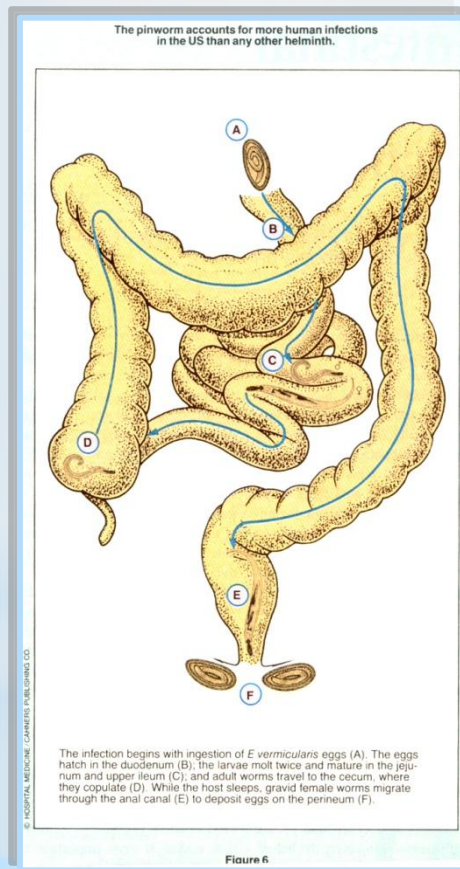


## Enterobius vermicularis

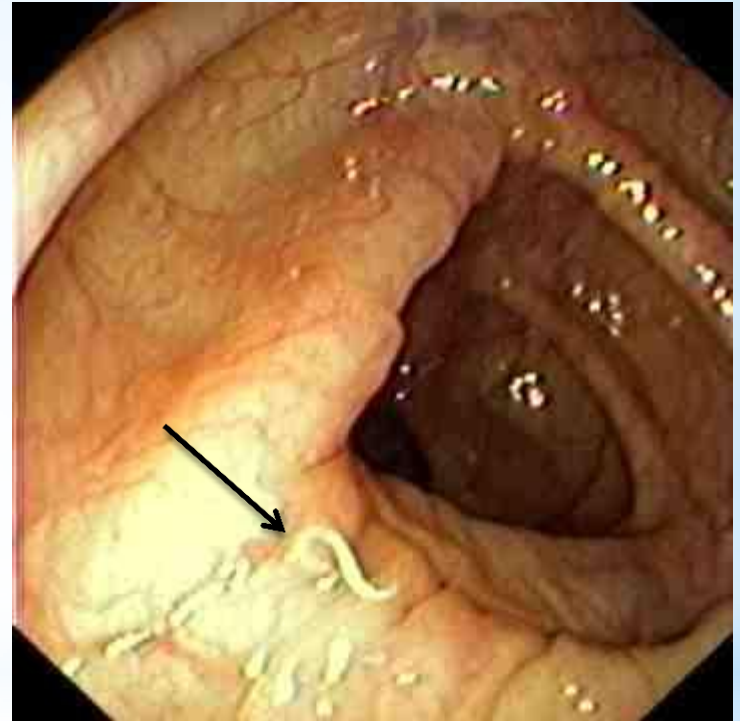


# Enterobius vermicularis

## دورة حياة الطفيل



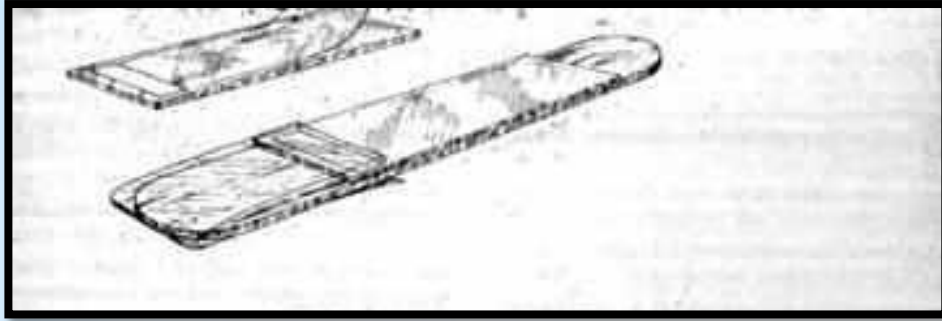
# Enterobius vermicularis





# Enterobius vermicularis

# تشخيص الإصابة



© 2004 Marcia Hartsok

**Phylum : Nematelminthes**

**Class : Nematode**

**Order : Strongylida**

**Family : Strongylidae**

**Ex. : 1- Strongylus vulgaris**

## Strongylus vulgaris



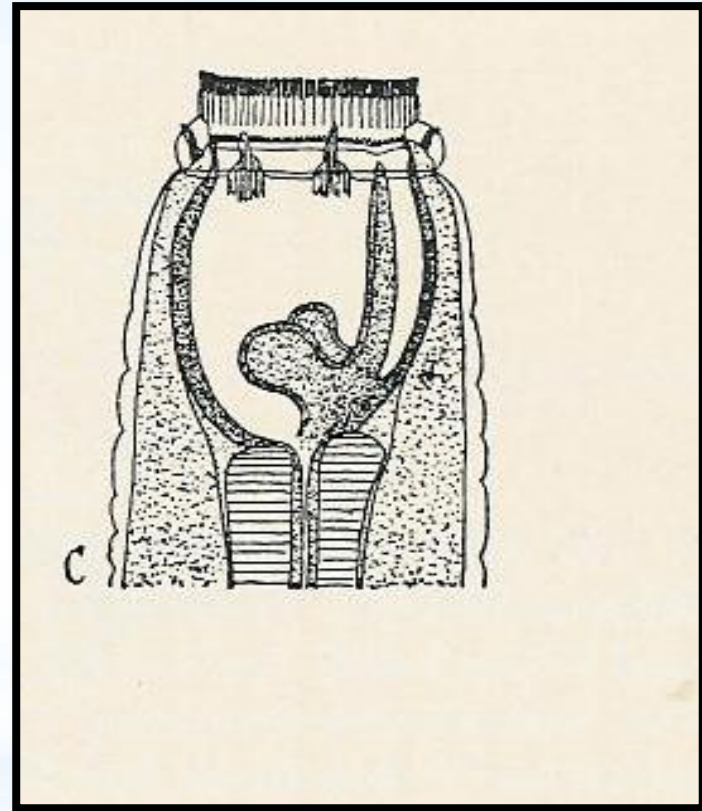
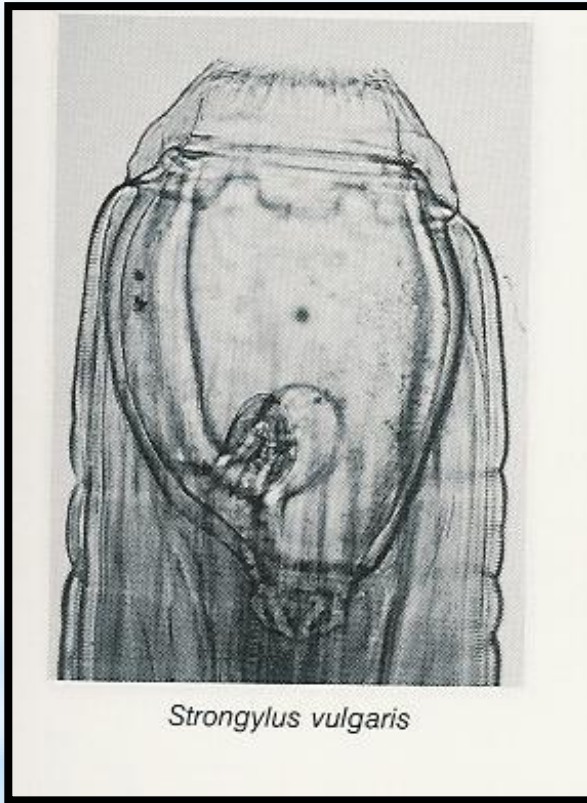
العائل النهائي:

---

العائل الوسيط:

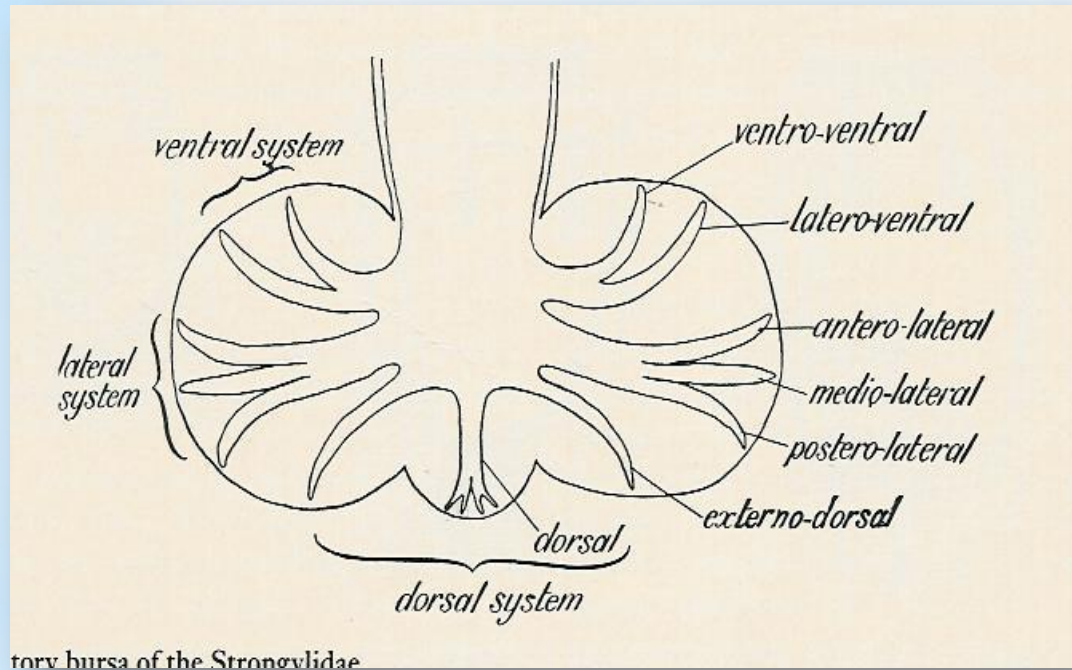
Strongylus vulgaris

شكل الطفيل



Anterior end  
(Male + Female)

# Strongylus vulgaris

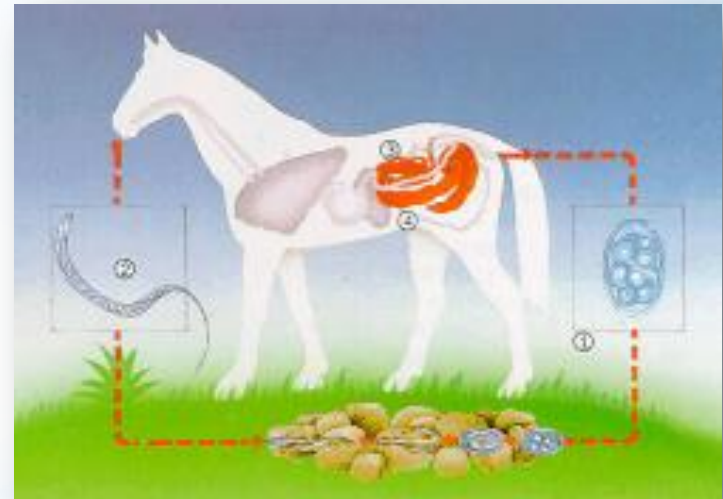
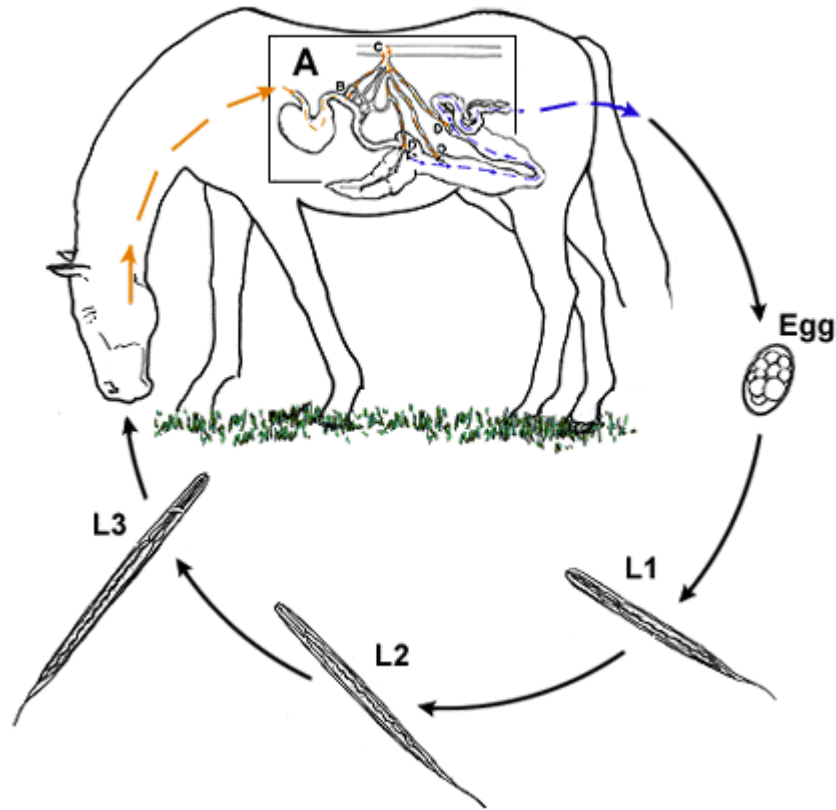


Posterior end of male  
( Copulatory bursa )

# Strongylus vulgaris

## دورة حياة الطفيل

### Strongylus vulgaris - Life Cycle



## Strongylus vulgaris



Abdominal surgery in a horse with chronic colic showing hemorrhagic nodules and swollen blood vessels (arrows) due to migrating larvae of *Strongylus equinus*

## الإمراضية



الشريان المساريقي الامامي ← L3

**Phylum : Nematelminthes**

**Class : Nematode**

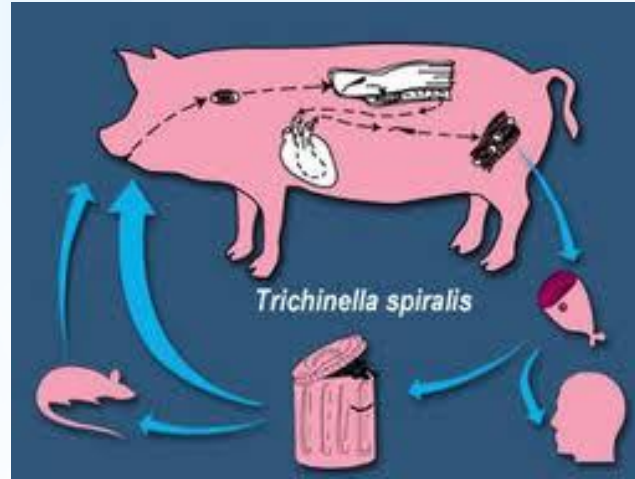
**Order : Enoplida**

**Family : Trichinellidae**

**Ex. : Trichinella spiralis**



# Trichinella spiralis



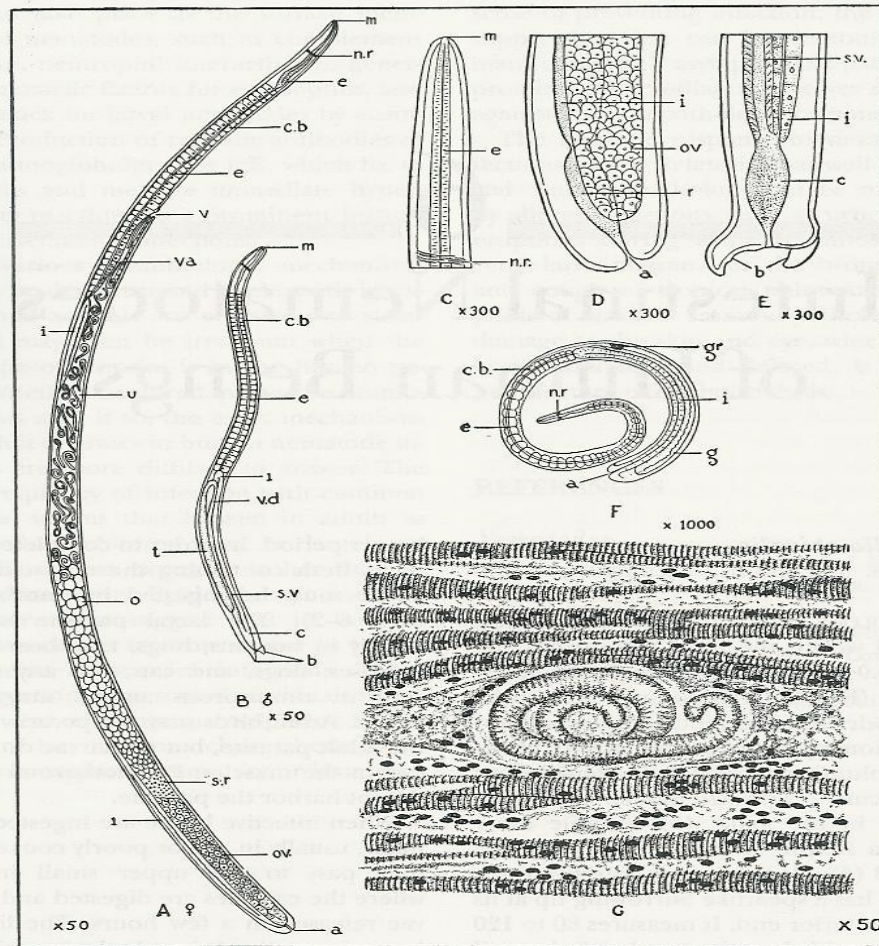
العائل النهائي:

---

العائل الوسيط:

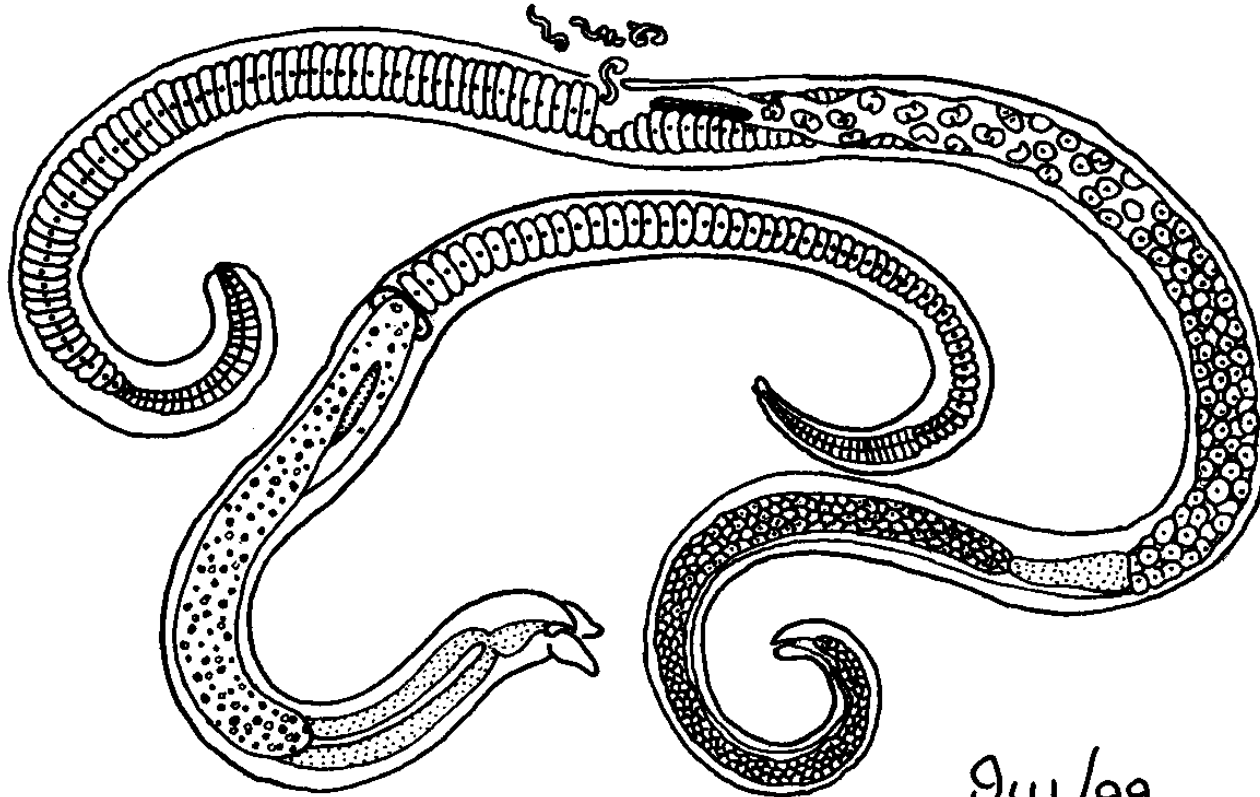
# Trichinella spiralis

## شكل الطفيل



**Figure 6-1.** Schematic representation of *Trichinella spiralis*. **A.** Adult female. **B.** Adult male. **C.** Anterior end of worm. **D.** Posterior end of female. **E.** Posterior end of male. **F.** Young larval worm. **G.** Early encysted larva in the muscle. (C adapted from Leuckart, 1868.) a=anus; b=bursa; c=cloaca; c.b.=cell bodies; e=esophagus; g=gonads (anlage); gr=granules; i=intestine; m=mouth; n.r.=nerve ring; o=ova; ov=ovary; r=rectum; s.r.=seminal receptacle; s.v.=seminal vesicle; t=testis; u=uterus containing larvae; v=vulva; va=vagina; v.d.=vas deferens.

Trichinella spiralis



94/99

© BIODIDAC, Livingstone

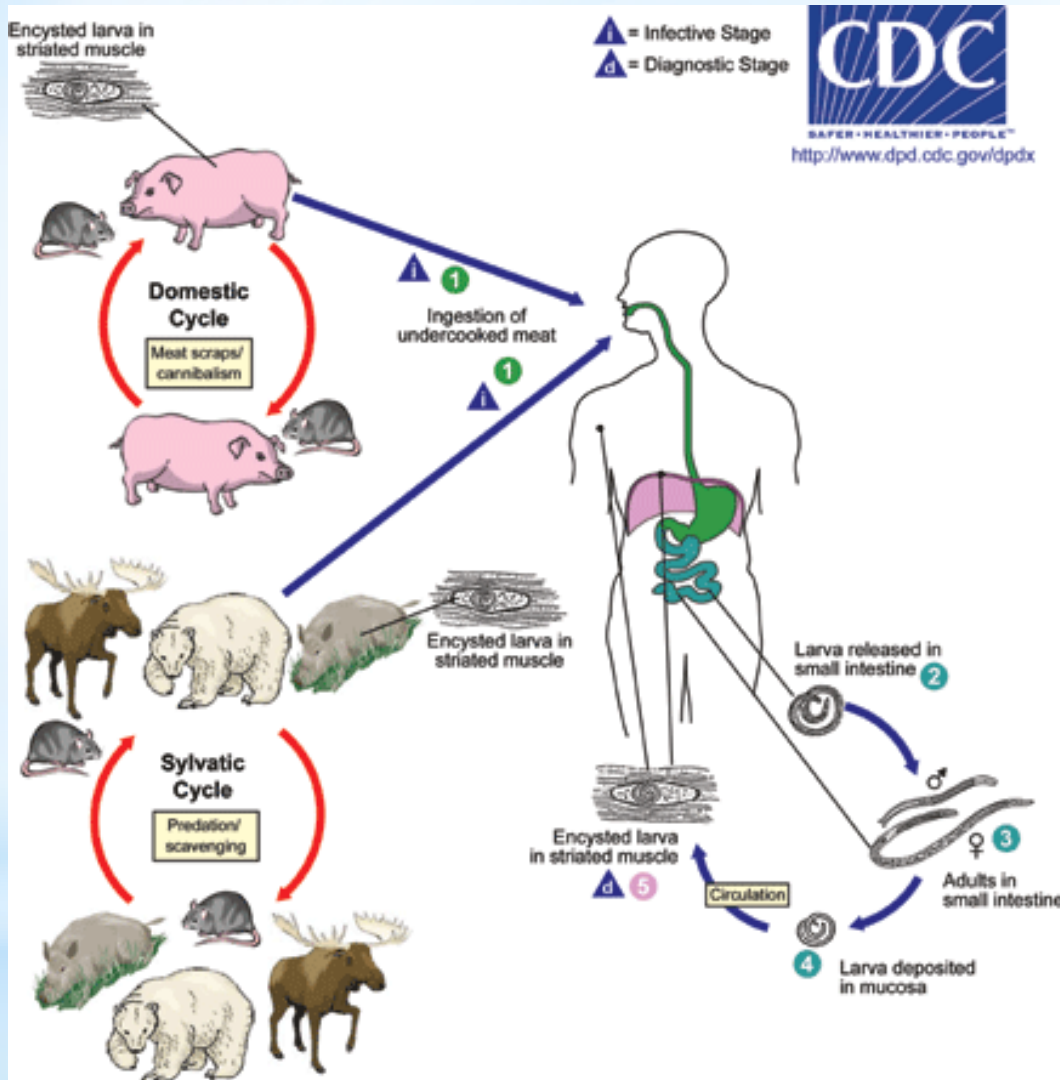
Trichinella spiralis



Larva in muscle

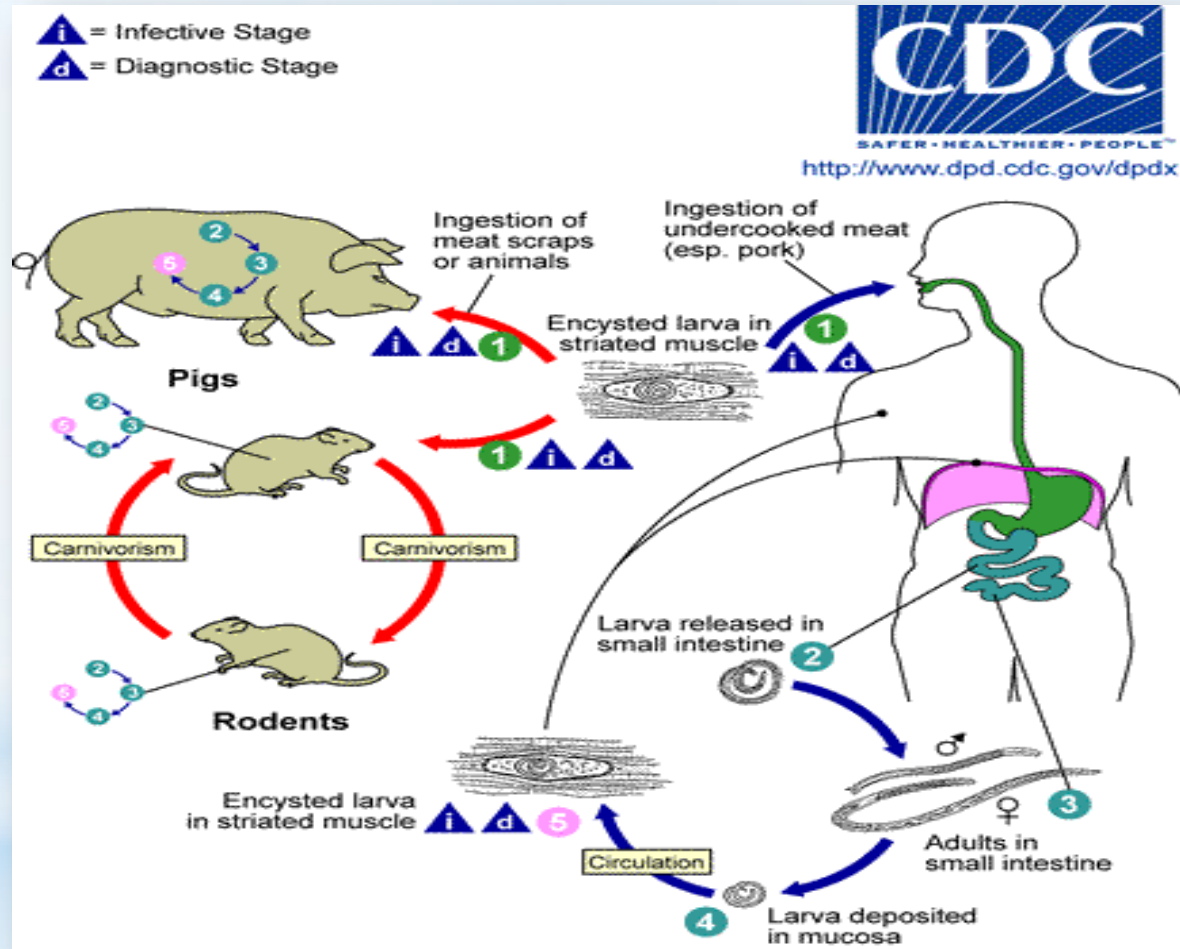
# Trichinella spiralis

## دورة حياة الطفيل



# Trichinella spiralis

## دورة حياة الطفيل



## Trichinella spiralis

## الأمراضية



**624 Patient with acute trichinosis** The four cardinal features of the disease are fever, orbital oedema, myalgia and eosinophilia.

**Phylum : Nematelminthes**

**Class : Nematode**

**Order : Enoplida**

**Family : Trichuridae**

**Ex. : Trichuris trichura**



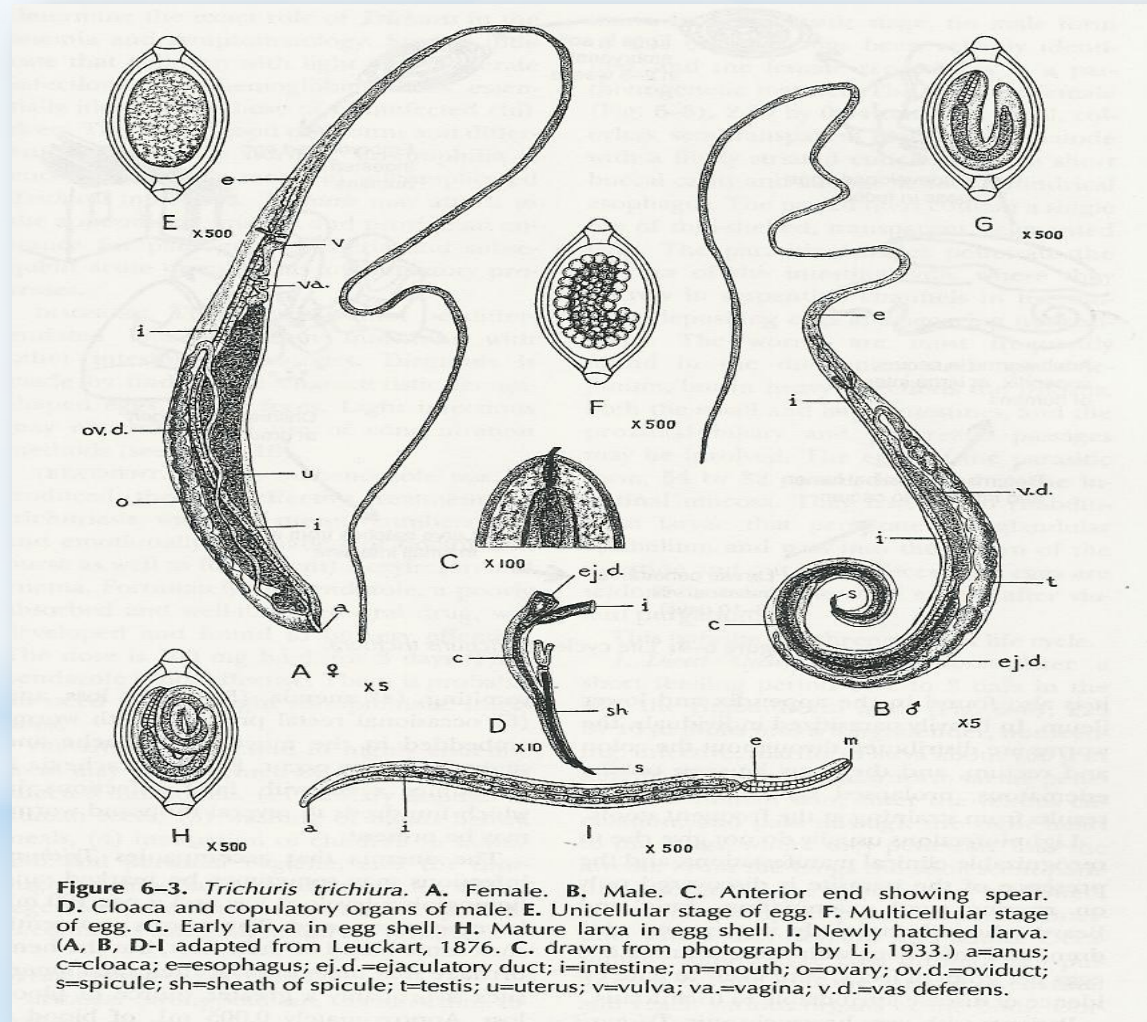
العائل النهائي:

---

العائل الوسيط:

# Trichuris trichura

## شكل الطفيل

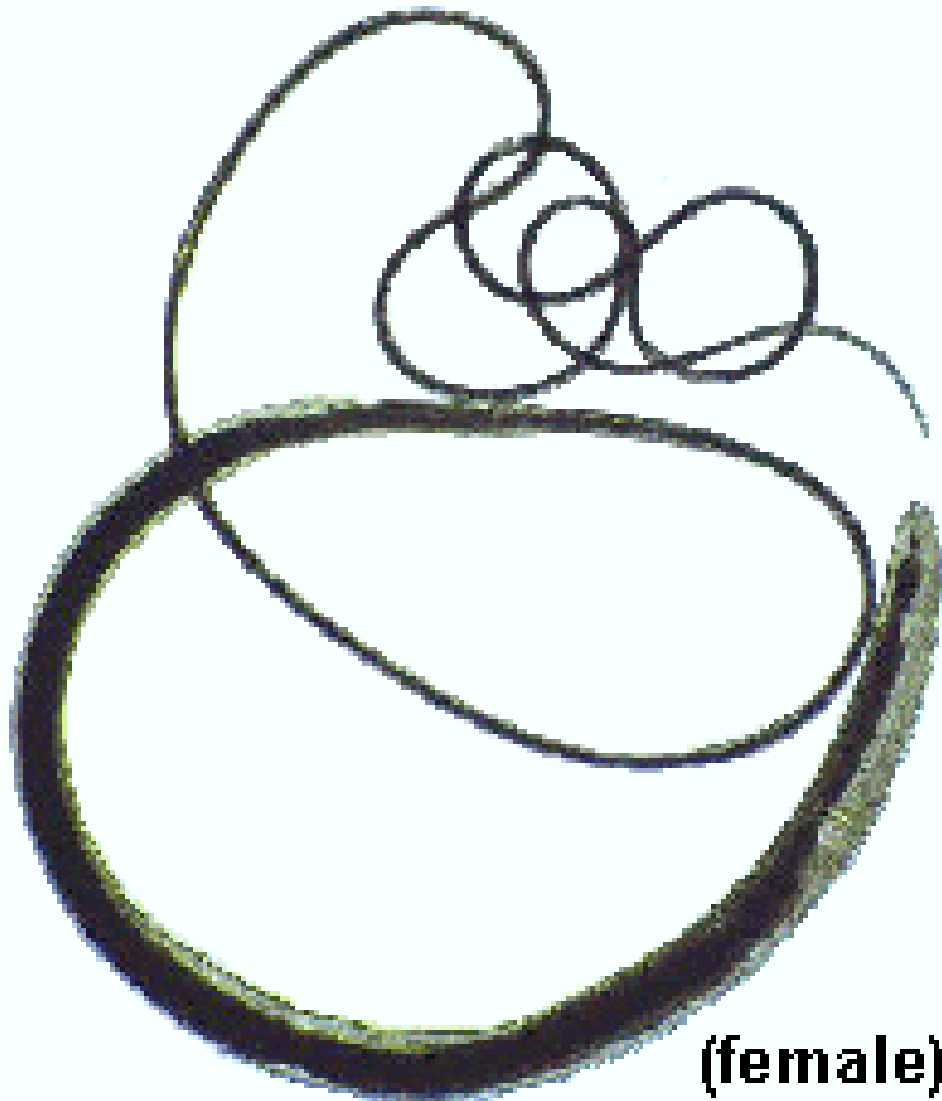


## Trichuris trichura



Cellular oesophagus

# *Trichuris trichiura*

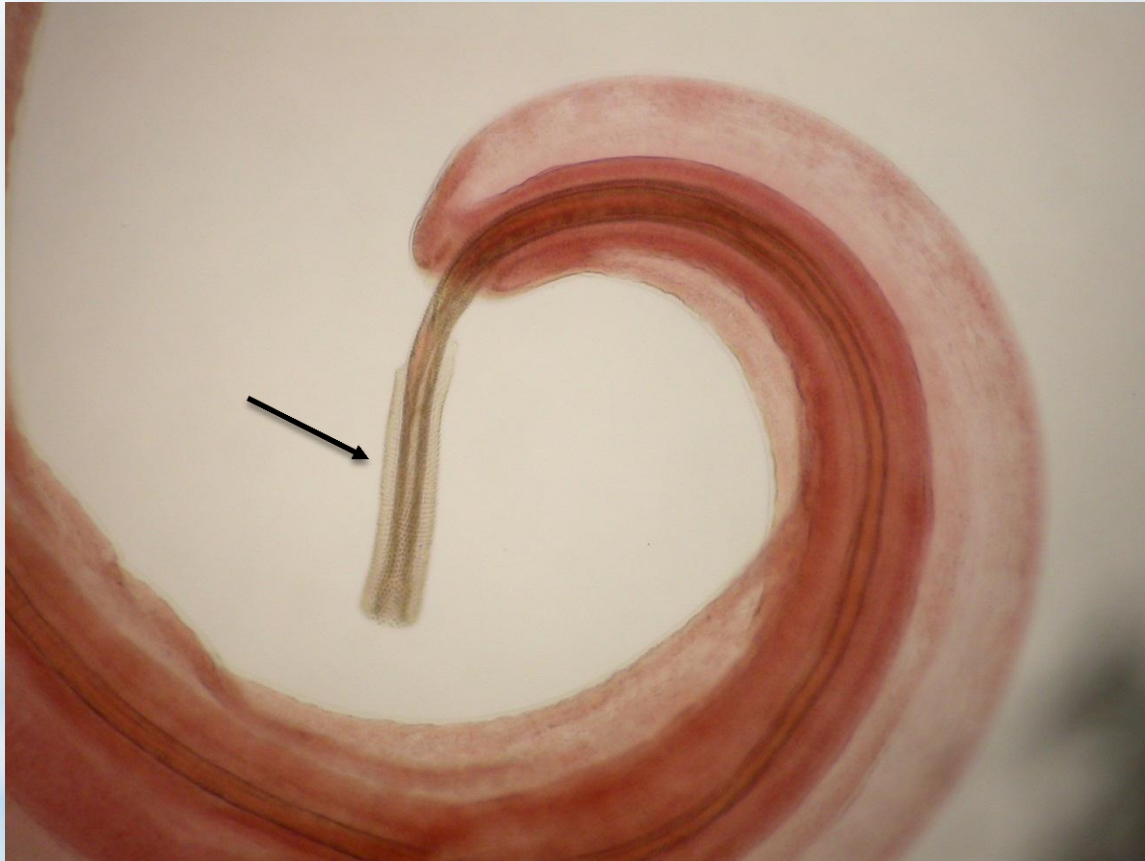


(female)



(male)

Trichuris trichura



Posterior end of male

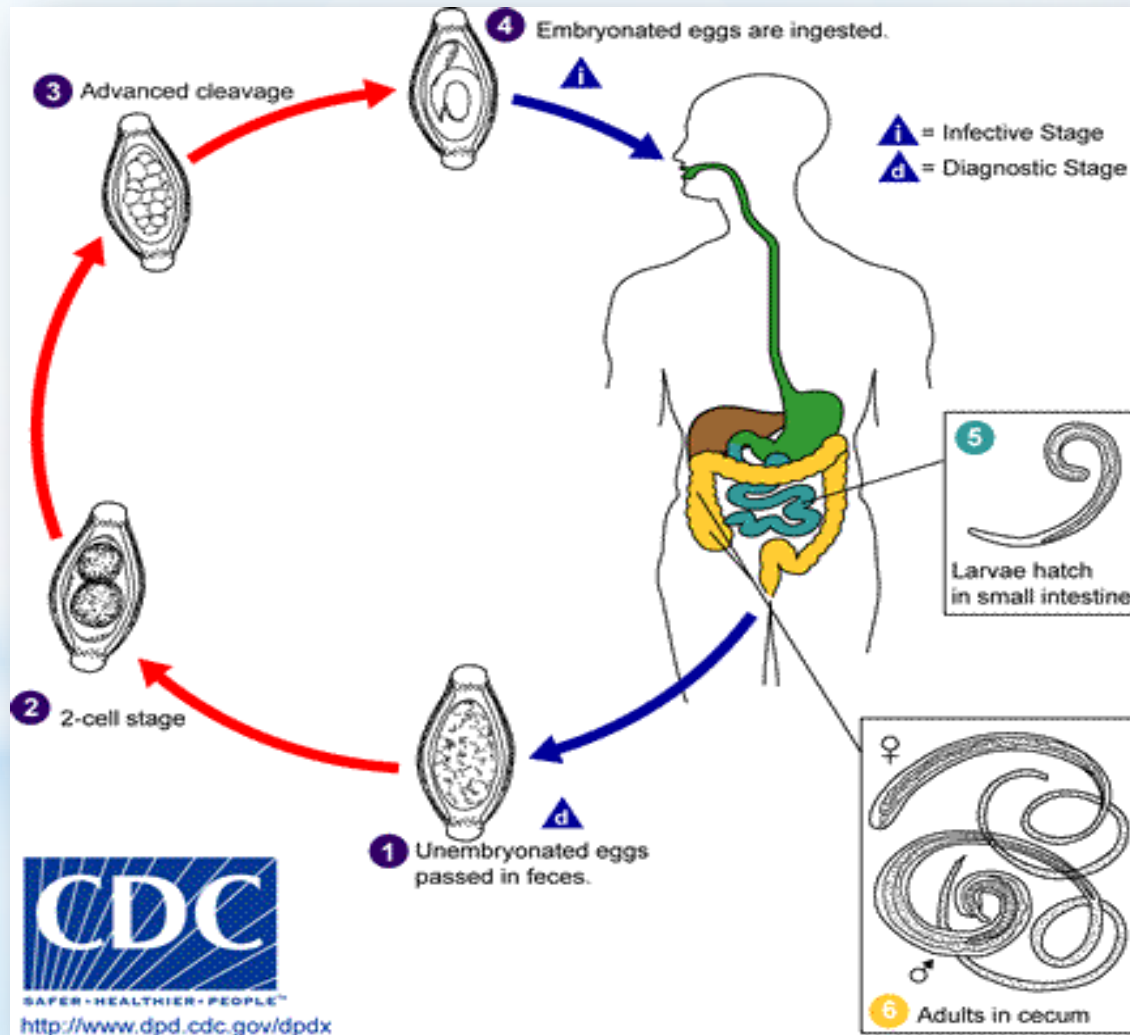
Trichuris trichura



Egg

# Trichuris trichura

## دورة حياة الطفيل



Trichuris trichura

الإمراضية







BittyAnimations