

1. ... tells Mr. Low that Koolhaas' ideas by the company's director.
- A. The general manager
 - B. The bookmaker
 - C. The doorman
 - D. The doctor
2. ... are well known for their happy endings.
- A. Charles Dickens'
 - B. Anne Radcliffe's
 - C. Edgar Allan Poe's
 - D. George Eliot's
3. Novels of ... are connected to Romanticism.
- A. sentiments
 - B. magic
 - C. manners
 - D. science fiction
4. In *Robinson Crusoe*, the hero's first voyage ended up in a shipwreck on a second voyage.
- A. he became a slave to a Moore
 - B. he became a captain
 - C. he became unhappy with sea travel
 - D. he became a priest
5. Alice Walker's *The Color Purple* is considered a contemporary
- A. gothic novel
 - B. historical novel
 - C. novel of sentiment
 - D. epistolary novel

7. Darkness is often used in *Heart of Darkness* to mean...
- A. the description of weather at the beginning of the novel
 - B. the gloomy weather of Brussels
 - C. literally inability to see
 - D. falling into the exploitation of Africa
8. ...did not learn to speak English until he was in his late 20s.
- A. Daniel Defoe
 - B. Paul Bowles
 - C. Joseph Conrad
 - D. Henry Fielding
9. Marlowe and his seamen stop 8 miles away from Kurtz' station because of...
- A. a band of thieves
 - B. a thunder storm
 - C. a fault in their boat
 - D. the fog
10. In *Robinson Crusoe*, "Friday" was the name of...
- A. a merchant the hero met in Lisbon
 - B. a parrot the hero adopted in his island
 - C. a prisoner the hero helped to free from the cannibals
 - D. a sailor the hero asked to fix his ship
11. Having obtained his wealth from Lisbon, Robinson Crusoe's last adventure was with...
- A. Spanish pirates
 - B. cannibals
 - C. French robbers
 - D. wolves
12. The audience for novels grew enormously during the nineteenth century of...
- A. the growth of cities
 - B. the spread of illiteracy
 - C. the development of upper class
 - D. the authority of churches

31. *Heart of Darkness* was written against the backdrop of the hypocrisy of _____ (New 12.2.2)

- A. the 19th century
 - B. Europe
 - C. Joseph Conrad
 - D. Marlow
32. With the emergence of novel, there was a general desire to _____ language close to _____
- A. the speech of women
 - B. the speech of the kings
 - C. the speech of merchants
 - D. the speech of the bourgeoisie

33. *Heart of Darkness* is set in the Congo at the time of the _____ colonization

- A. French
- B. Belgian
- C. Italian
- D. British

34. Henry Fielding's *Shamela* is considered a parody to _____

- A. Samuel Richardson
- B. Charles Dickens
- C. Miguel de Cervantes
- D. James Joyce

35. _____ characters, in historical novels, interact with historical figures and actual events.

- A. Fictional
- B. Naturalistic
- C. Realistic
- D. Romantic

36. Daniel Defoe was truly considered one of the fathers of _____

- A. Metaphysical literature
- B. Romantic literature
- C. Travel literature
- D. Contemporary literature

19. Early novels were published
A. in the form of diaries
B. in book format
C. in manuscript format
D. as serial stories in newspapers

20. *Heart of Darkness* begins on a yacht called the at the mouth of the Thames River.
A. Shelle
B. Millie
C. Kellie
D. Nellie

21. Naturalism is characterized by all of the following aspects except:
A. the pessimistic
B. the scientific
C. the pragmatic
D. objective and amoral

22. One of the following novels was not written by Aphra Behn.
A. *Love Letters between a Nobleman and His Sister*
B. *The Great Gatsby*
C. *The Fair Jilt*
D. *Oroonoko*

23. The Restoration of the monarchy (1660) in England after the Puritan Commonwealth (1649-1660) encouraged an outpouring of literature.
A. religious
B. travel
C. social
D. secular

24. Kurtz's ramblings become as his condition worsens.
A. more physical
B. more rhetorical
C. more psychological
D. more romantic

25. Robinson Crusoe's choice to ... because of reading the Bible.
A. Kurtz
B. the natives
C. the Europeans
D. God

is not symbolized by Robinson Crusoe

26. One of the following is not symbolized by Robinson Crusoe.
A. the British conquest
B. authority of the white race
C. rudimentary political hierarchy
D. the romantic lover

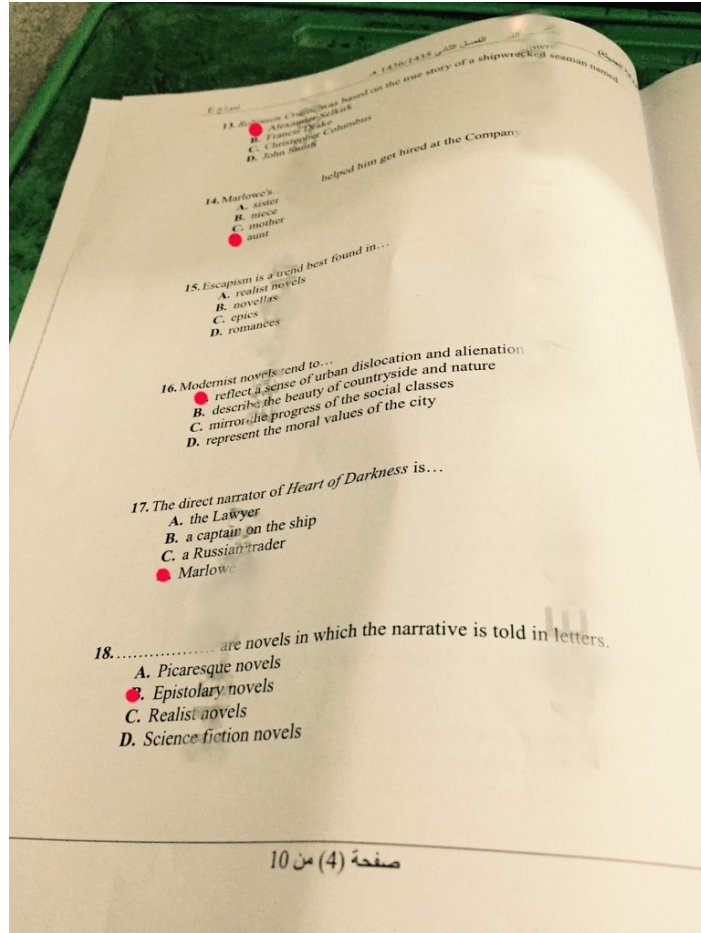
the romantic lover

27. Marlow tells Kurtz's fiancée that his last word was.....
A. hope is my destiny
B. her name
C. horror, horror
D. death is awaiting

28. In his attack on a group of cannibals,.....frightens them with the steam whistle.
A. the madigger
B. the accountant
C. Kurtz
D. Marlowe

29. Daniel Defoe completed writing Robinson Crusoe when he was:
A. 95
B. 29
C. 59
D. 35

30. All of the following are avant-garde movements except:
A. Naturalism
B. Dadaism
C. Expressionism
D. Surrealism



الأسئلة التي حلقتها هي التي متأكدته منها