

س 48 جوابه التحجر Fossilization

49. In order to give a systematic description of context, Applied linguistics has drawn upon, and also developed.....
- A. corpus analysis
 - B. discourse analysis
 - C. sociolinguistics
 - D. semantics
50. Three areas of study which contribute to discourse analysis are
- A. applied linguistics, pragmatics, and literature
 - B. paralinguistics, pragmatics, and stylistics
 - C. linguistics, translation, and genre studies
 - D. paralinguistics, pragmatics, and genre studies

- A. Language teaching
- B. Language planning
- C. Language learning
- D. Language testing

سبق موجود فوق سؤال 46 , 47 , 48

47. The generative linguist was interested not only in describing language but also in arriving at an explanatory level ofin the study of language.

- A. adequacy
- B. importance
- C. discovery
- D. observation

48. The relatively permanent incorporation of incorrect linguistic forms into a person's second language competence has been referred to as.....

- A. imitation
- B. fossilization
- C. stabilization
- D. realization

43. If a test gives consistent results it is

- A. valid
- B. practical
- C. reliable
- D. useful

44. The believed that neither explicit instruction nor conscious learning had any effect.

- A. Direct Method
- B. Communicative Method
- C. Grammar Translation Approach
- D. Natural Language Learning

45. A test is if it tests what it is supposed to test.

- A. valid
- B. practical
- C. reliable
- D. useful

6. is the practice and study of evaluating the proficiency of in using a particular language effectively.

- A. Language teaching
- B. Language planning

نموذج C

13. In subjective tests the learners ability or are judged by examiners' opinion and judgment.

- performance
- look
- style
- system

14. is one's underlying knowledge of the system of a language.

- Practice
- Interaction
- Competence
- Performance

15. Language use is in many ways a natural beyond conscious control.

- knowledge
- study
- theory
- phenomenon

16. In Chomsky's view, the newborn infant brain already contains a

- General intelligence
- Universal Grammar (UG)
- Learning ability

Conversations, consultations, lessons, emails, Web pages, brochures, papers, news
bulletins, stories, and jokes are examples of

- A. linguistics
- B. genre
- C. pragmatics
- D. paralinguistics

8. information is usually conveyed by means of linguistic devices.

- A. Negative
- B. Positive
- C. Cognitive
- D. Affective

9. First-language explanation and translation were not possible in

- A. Natural Language Learning
- B. Direct Method
- C. Grammar Translation Approach
- D. Communicative Method

10. Lexicography is the planning and compiling of both monolingual and
bilingual, and other language reference works such as thesauri.

- A. references
- B. dictionaries
- C. archives
- D. documents

11. Essay questions can be used to measure higher order skills.

- B. cognitive
- A. integrative
- C. interpretative
- D. communicative

12. True or false questions are moderately easy to write and easily

- A. understood
- B. structured
- C. scored
- D. designed

19. Success was measured in the Grammar Translation Approach in terms of the accurate use of

- A. syntax and morphology
- B. listening
- C. grammar and vocabulary
- D. communication

20. should elicit information on what students need to work in the future.

- A. Achievement tests
- B. Proficiency tests
- C. Placement tests
- D. Diagnostic tests

21. Feasibility is a concept concerned with limitations to what can be processed by the mind.

- A. grammatical
- B. sociological
- C. psychological
- D. morphological

22. Linguists' concern is knowledge as an end in itself rather than with action based upon that

- A. knowledge
- B. prescription
- C. phenomenon
- D. activity

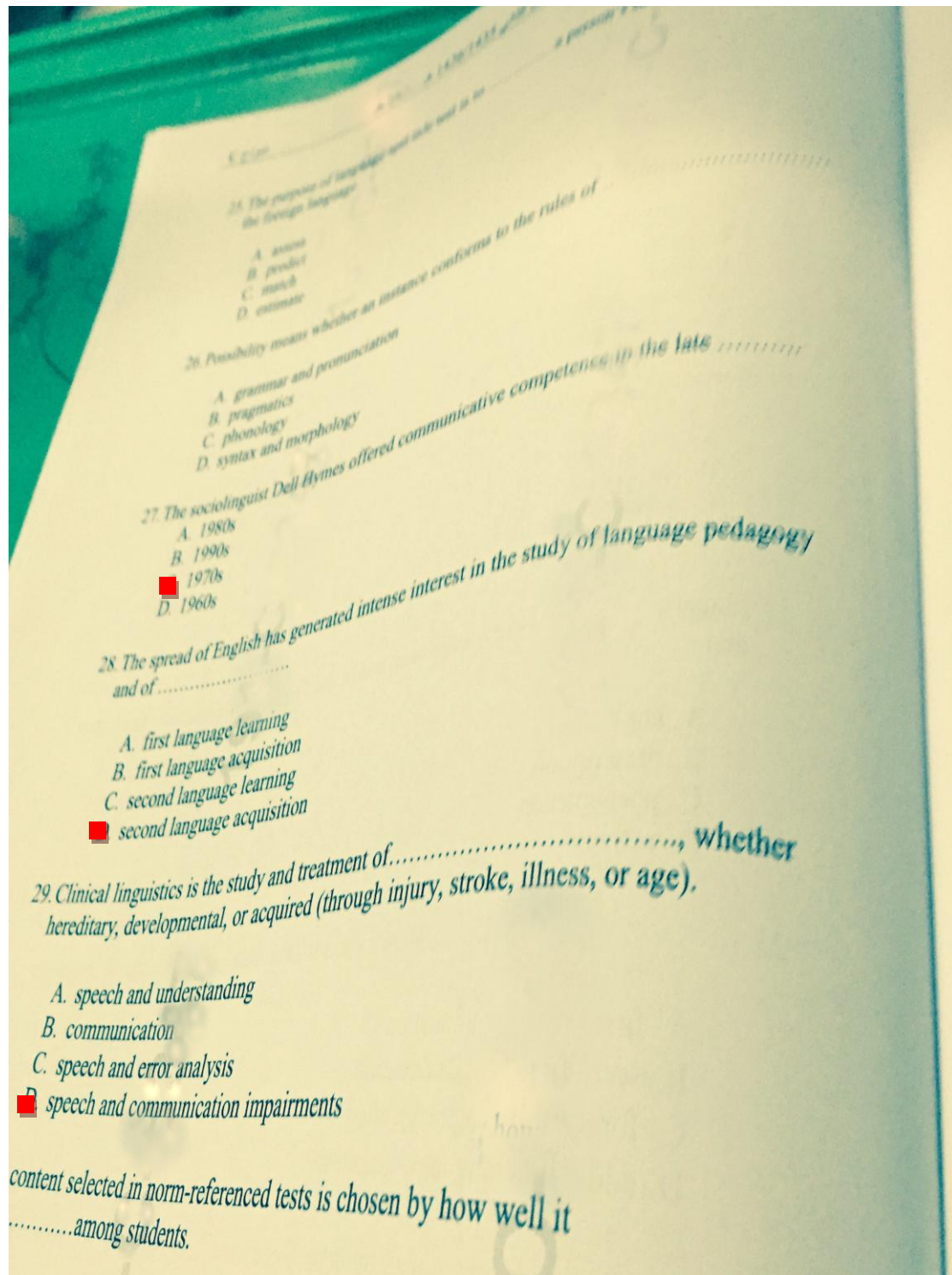
23., when a child studies their home language or languages

- A. first-language education
- B. second language education
- C. foreign language education
- D. additional language education

24. Noam Chomsky introduced the term Generative Linguistics in onw

- A. 1960s
- B. 1980s
- C. 1950s

31. should be limited to particular material addressed in a curriculum within a particular time frame.
- A. Diagnostic tests
 - B. Proficiency tests
 - C. Placement tests
 - D. Achievement tests
32. is a clean slate bearing no preconceived notions about the world or about language.
- A. Lingua franca
 - B. Paralanguage
 - C. Second Language Acquisition
 - D. Tabula rasa
33. Literary stylistics is the study of the relationship between linguistic choices and effects on.....
- A. language
 - B. literature
 - C. people
 - D. letters
34. The cheese the rat the cat the dog the man beat saw chased ate was green is an example of
- A. possibility
 - B. attestedness
 - C. appropriateness
 - D. feasibility
35. Native speakers are considered to be people who acquired the language naturally and effortlessly in.....



25. The purpose of language tests is to measure the ability of the test-taker to use the foreign language.

- A. assess
- B. predict
- C. match
- D. estimate

26. Possibility means whether an instance conforms to the rules of

- A. grammar and pronunciation
- B. pragmatics
- C. phonology
- D. syntax and morphology

27. The sociolinguist Dell Hymes offered communicative competence in the late

- A. 1980s
- B. 1990s
- C. 1970s
- D. 1960s

28. The spread of English has generated intense interest in the study of language pedagogy and of

- A. first language learning
- B. first language acquisition
- C. second language learning
- D. second language acquisition

29. Clinical linguistics is the study and treatment of, whether hereditary, developmental, or acquired (through injury, stroke, illness, or age).

- A. speech and understanding
- B. communication
- C. speech and error analysis
- D. speech and communication impairments

.....among students.

نوع C

25. The purpose of language aptitude test is to a person's success to exposure to the foreign language.

- A. assess
- B. predict
- C. match
- D. estimate

26. Possibility means whether an instance conforms to the rules of

- A. grammar and pronunciation
- B. pragmatics
- C. phonology
- D. syntax and morphology

The sociolinguist Dell Hymes offered communicative competence in the late

- A. 1980s
- B. 1990s
- C. 1970s
- D. 1960s

pread of English has generated international

15. Language use is

- A. knowledge
- B. study
- C. theory
- D. phenomenon

16. In Chomsky's view, the newborn infant brain already contains a.....

- A. General intelligence
- B. Universal Grammar (UG)
- C. Learning ability
- D. Minimal exposure

17. Language competence test is a test that involves components of language such as vocabulary, grammar, and

- A. spelling
- B. writing
- C. pronunciation
- D. listening

18. Second Language Acquisition research concerned itself with both explaining and describing the process of a second language.

- A. teaching
- B. acquiring
- C. overcoming
- D. learning

