

7. At the of Virtue, Herbert mentions invocation.
- A. The last moment
 - B. Beginning
 - C. last line
 - D. Proper time
8. In his Milton wrote five masterful long poems.
- A. Early childhood
 - B. Thirties
 - C. Twenties
 - D. Last days
9. Milton used a symbol in Paradise Lost.
- A. The angels in the sky.
 - B. The stars in the sky the moon in the sky.
 - C. The clouds in the sky.
 - D. The scales in the sky.
10. Virtue does not include the theme of.....
- A. Life and death
 - B. Motherhood
 - C. Belief
 - D. Creation
11. The evening indicates.....in To Daffodils.
- A. The song of death
 - B. The song of pleasure.
 - C. The miseries in life.
 - D. Mystery.
12. was highly represented by Milton.
- A. The Evil Spirit
 - B. The Restoration spirit
 - C. The Romantic spirit
 - D. The Puritan spirit

Handwritten Arabic notes on the right side of the page, including the words "الروحاني" (the spiritual) and "الطبيعي" (the natural).

13. Dryden's poetry and literary criticism contribute extremely to.....
- A. greatness
 - B. fiasco
 - C. Failure
 - D. sufferings
14. A comparison between two devices is.....
- A. A simile
 - B. Personification
 - C. A metaphor
 - D. Anachronism
15. The poet in To Daffodils expresses his wishes to the daffodils after the evening prayer.
- A. destroy
 - B. Accompany
 - C. Knock down
 - D. Depart
16. witnessed the birth of Herbert in 1593.
- A. Paris
 - B. Amsterdam
 - C. Cairo
 - D. Wales
17. The mixture of didactic strain and a current of quaint humor characterizes.....
- A. Ibsen's drama
 - B. Shakespeare's drama
 - C. Herbert's poetry
 - D. Wordsworth's poetry
18. Comus is an early poem of
- A. Milton
 - B. Coleridge
 - C. Dryden
 - D. Blake

Handwritten notes in Arabic script, including the word "مقارنة" (comparison) and other illegible text.

19. Cleopatra got a promise from.....to be the queen of Egypt and Syria.
A. Her father
B. Antony's wife
C. Ventidius
→ D. Octavius

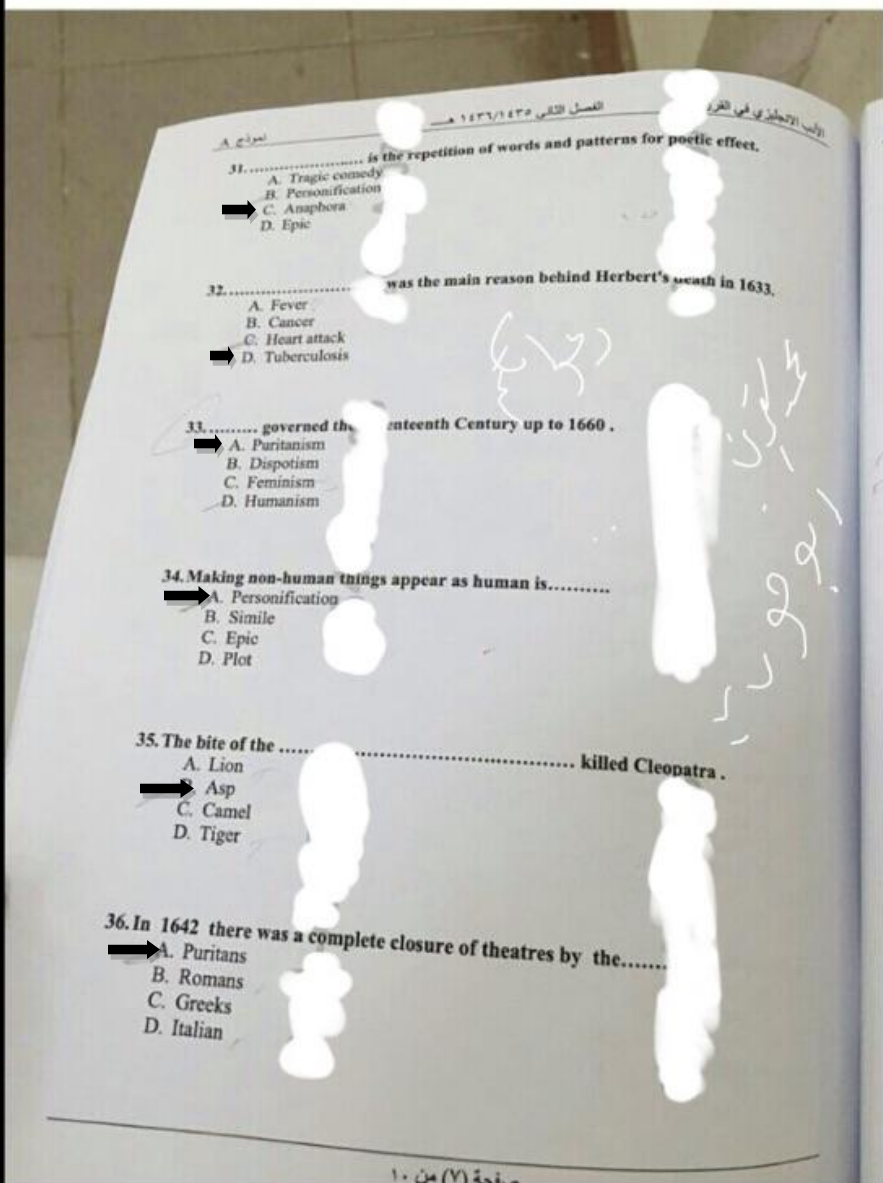
20. Alexandria in *All For Love* suffered greatly under.....by the Roman troops.
A. Water
B. Fire
C. Rain
→ D. A siege

21. is the sub-title of *All For Love*.
A. The Well Worn Lion
B. The world Lion
→ C. The World Well Worn
D. The Amazing word

22. qualities distinguished the heroes and heroines in Heroic Tragedy.
A. Animal
B. Human
C. Inanimate
→ D. Superhuman

23. The main theme in *Paradise Lost* is the conflict between rebellion and
A. Disobedience
B. Dishonesty
→ C. Obedience
D. Discipline

24. The loss of pure love in *Paradise Lost* is represented by
→ A. The fallen serpent
B. The fallen star
C. The fallen boy
D. The fallen tree



الأسئلة المتعددة الخيارات
نموذج A

31. is the repetition of words and patterns for poetic effect.

- A. Tragic comedy
- B. Personification
- C. Anaphora
- D. Epic

32. was the main reason behind Herbert's death in 1633.

- A. Fever
- B. Cancer
- C. Heart attack
- D. Tuberculosis

33. governed the seventeenth Century up to 1660 .

- A. Puritanism
- B. Dispotism
- C. Feminism
- D. Humanism

34. Making non-human things appear as human is.....

- A. Personification
- B. Simile
- C. Epic
- D. Plot

35. The bite of the killed Cleopatra .

- A. Lion
- B. Asp
- C. Camel
- D. Tiger

36. In 1642 there was a complete closure of theatres by the.....

- A. Puritans
- B. Romans
- C. Greeks
- D. Italian

37. Act 2, witnessed the

- A. Guns
- B. Shields
- C. Swords
- D. Diamonds

38. The dew is compared to

- A. Paradise Lost
- B. Virtue
- C. To Daffodils
- D. The Nature

39. The most prominent poet of the 18th century is

- A. Shakespeare
- B. Congreve
- C. Coleridge
- D. Blake

40. The of the 18th century was

- A. Decline
- B. Success
- C. Supplication
- D. Achievement

41. Dryden wrote a tragedy

- A. The Assignation
- B. Macbeth
- C. Hamlet
- D. A Doll's House

42. During the.....

- A. 15th Century
- B. 14th Century
- C. 19th Century
- D. 16th Century

نوع: أ

..... by Dryden does not have a confused ending.

- A. Endless Love
- B. Love madness
- C. Tyrannic love
- D. Love ecstasy

44. In *Paradise Lost*, Sin and Death are the..... of the Satan.

- A. Relatives
- B. Children
- C. Daughters
- D. Friends

45. Who wrote *To Daft*.....

- A. Herrick
- B. Shakespeare
- C. Blake
- D. Synge

46. Faith is a significant theme in.....

- A. Next Please
- B. The Tyger
- C. The Rainbow
- D. Virtue

47. According to Milton husbands must be..... to their wives.

- A. Obsequious
- B. Submissive
- C. Superior
- D. Subservient

48. were not favored by the common people during Restoration Period.

- A. Museums
- B. Theatre
- C. Trips
- D. Love songs

الاجابة هي